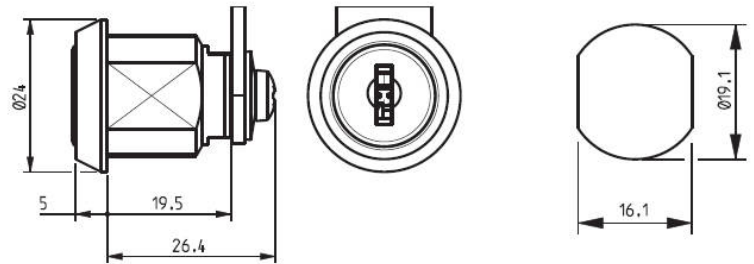
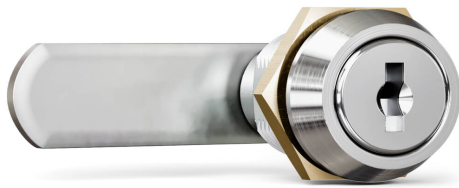


# RONIS 25300



## SECURITY TYPE

Wafer System

## AVAILABLE LOCKS FIXINGS

Lock Fixing ID	Lock Fixing
L1	Horseshoe Clip
L2	Nuts

## AVAILABLE KEY SERIES

Key Series	Combinations	MK Possible
4R	4000	Yes
CC	2000	Yes
KT	1000	Yes
SH	200	No
SM	200	Yes
TK	1000	Yes

## AVAILABLE ROTATIONS

Direction ID	Degrees	Direction	Key Extraction
D01	180	Left & Right	2
D02	90	Right Opening - Left Closing	1
D03	90	Left Opening - Right Closing	1
D04	90	Right Opening - Left Closing	2
D05	90	Left Opening - Right Closing	2

## TECHNICAL FEATURES

Standard Material	Zamak
Standard Finish	Bright Nickel, Bright Chrome
Number of Keys	2
Standard Cam Family	131100

# RONIS 25300

## TECHNICAL FEATURES (CONTINUED)

Body Length	19.50
-------------	-------

## APPLICATIONS OF USE

Metal Furniture, Hygiene, Electrical Equipment, Retail, Storage

## ORDER INFORMATION

Type	Direction ID	Lock Fixing	Panel Thickness	Cam Fixing	Cam Family	Key Series	Product Code	DOM Ronis Reference
25300	D01	Horseshoe Clip	0.8 - 1.2	Nuts	131100	4R	25300-D01-L1-C2-4R	25300-10
25300	D01	Horseshoe Clip	0.8 - 1.2	Nuts	131100	CC	25300-D01-L1-C2-CC	25300-10
25300	D01	Horseshoe Clip	0.8 - 1.2	Screw	131100	KT	25300-D01-L1-C3-KT	25300-10
25300	D01	Horseshoe Clip	0.8 - 1.2	Screw	131100	SH	25300-D01-L1-C3-SH	25300-10
25300	D01	Horseshoe Clip	0.8 - 1.2	Screw	131100	SM	25300-D01-L1-C3-SM	25300-10
25300	D01	Horseshoe Clip	0.8 - 1.2	Screw	131100	TK	25300-D01-L1-C3-TK	25300-10
25300	D01	Horseshoe Clip	0.8 - 1.2	Spun-on	131100	4R	25300-D01-L1-C4-4R	25300-10
25300	D01	Horseshoe Clip	0.8 - 1.2	Spun-on	131100	CC	25300-D01-L1-C4-CC	25300-10
25300	D01	Horseshoe Clip	0.8 - 1.2	Spun-on	131100	KT	25300-D01-L1-C4-KT	25300-10
25300	D01	Horseshoe Clip	0.8 - 1.2	Spun-on	131100	TK	25300-D01-L1-C4-TK	25300-10
25300	D01	Nuts	10.0	Nuts	131100	4R	25300-D01-L2-C2-4R	25300-10
25300	D01	Nuts	10.0	Nuts	131100	CC	25300-D01-L2-C2-CC	25300-10
25300	D01	Nuts	10.0	Screw	131100	KT	25300-D01-L2-C3-KT	25300-10
25300	D01	Nuts	10.0	Screw	131100	SH	25300-D01-L2-C3-SH	25300-10
25300	D01	Nuts	10.0	Screw	131100	SM	25300-D01-L2-C3-SM	25300-10
25300	D01	Nuts	10.0	Screw	131100	TK	25300-D01-L2-C3-TK	25300-10

# RONIS 25300

Type	Direction ID	Lock Fixing	Panel Thickness	Cam Fixing	Cam Family	Key Series	Product Code	DOM Ronis Reference
25300	D01	Nuts	10.0	Spun-on	131100	4R	25300-D01-L2-C4-4R	25300-10
25300	D01	Nuts	10.0	Spun-on	131100	CC	25300-D01-L2-C4-CC	25300-10
25300	D01	Nuts	10.0	Spun-on	131100	KT	25300-D01-L2-C4-KT	25300-10
25300	D01	Nuts	10.0	Spun-on	131100	TK	25300-D01-L2-C4-TK	25300-10
25300	D02	Horseshoe Clip	0.8 - 1.2	Nuts	131100	4R	25300-D02-L1-C2-4R	25300-01
25300	D02	Horseshoe Clip	0.8 - 1.2	Nuts	131100	CC	25300-D02-L1-C2-CC	25300-01
25300	D02	Horseshoe Clip	0.8 - 1.2	Screw	131100	KT	25300-D02-L1-C3-KT	25300-01
25300	D02	Horseshoe Clip	0.8 - 1.2	Screw	131100	SH	25300-D02-L1-C3-SH	25300-01
25300	D02	Horseshoe Clip	0.8 - 1.2	Screw	131100	SM	25300-D02-L1-C3-SM	25300-01
25300	D02	Horseshoe Clip	0.8 - 1.2	Screw	131100	TK	25300-D02-L1-C3-TK	25300-01
25300	D02	Horseshoe Clip	0.8 - 1.2	Spun-on	131100	4R	25300-D02-L1-C4-4R	25300-01
25300	D02	Horseshoe Clip	0.8 - 1.2	Spun-on	131100	CC	25300-D02-L1-C4-CC	25300-01
25300	D02	Horseshoe Clip	0.8 - 1.2	Spun-on	131100	KT	25300-D02-L1-C4-KT	25300-01
25300	D02	Horseshoe Clip	0.8 - 1.2	Spun-on	131100	TK	25300-D02-L1-C4-TK	25300-01
25300	D02	Nuts	10.0	Nuts	131100	4R	25300-D02-L2-C2-4R	25300-01
25300	D02	Nuts	10.0	Nuts	131100	CC	25300-D02-L2-C2-CC	25300-01
25300	D02	Nuts	10.0	Screw	131100	KT	25300-D02-L2-C3-KT	25300-01
25300	D02	Nuts	10.0	Screw	131100	SH	25300-D02-L2-C3-SH	25300-01
25300	D02	Nuts	10.0	Screw	131100	SM	25300-D02-L2-C3-SM	25300-01
25300	D02	Nuts	10.0	Screw	131100	TK	25300-D02-L2-C3-TK	25300-01

# RONIS 25300

Type	Direction ID	Lock Fixing	Panel Thickness	Cam Fixing	Cam Family	Key Series	Product Code	DOM Ronis Reference
25300	D02	Nuts	10.0	Spun-on	131100	4R	25300-D02-L2-C4-4R	25300-01
25300	D02	Nuts	10.0	Spun-on	131100	CC	25300-D02-L2-C4-CC	25300-01
25300	D02	Nuts	10.0	Spun-on	131100	KT	25300-D02-L2-C4-KT	25300-01
25300	D02	Nuts	10.0	Spun-on	131100	TK	25300-D02-L2-C4-TK	25300-01
25300	D03	Horseshoe Clip	0.8 - 1.2	Nuts	131100	4R	25300-D03-L1-C2-4R	25300-25
25300	D03	Horseshoe Clip	0.8 - 1.2	Nuts	131100	CC	25300-D03-L1-C2-CC	25300-25
25300	D03	Horseshoe Clip	0.8 - 1.2	Screw	131100	KT	25300-D03-L1-C3-KT	25300-25
25300	D03	Horseshoe Clip	0.8 - 1.2	Screw	131100	SH	25300-D03-L1-C3-SH	25300-25
25300	D03	Horseshoe Clip	0.8 - 1.2	Screw	131100	SM	25300-D03-L1-C3-SM	25300-25
25300	D03	Horseshoe Clip	0.8 - 1.2	Screw	131100	TK	25300-D03-L1-C3-TK	25300-25
25300	D03	Horseshoe Clip	0.8 - 1.2	Spun-on	131100	4R	25300-D03-L1-C4-4R	25300-25
25300	D03	Horseshoe Clip	0.8 - 1.2	Spun-on	131100	CC	25300-D03-L1-C4-CC	25300-25
25300	D03	Horseshoe Clip	0.8 - 1.2	Spun-on	131100	KT	25300-D03-L1-C4-KT	25300-25
25300	D03	Horseshoe Clip	0.8 - 1.2	Spun-on	131100	TK	25300-D03-L1-C4-TK	25300-25
25300	D03	Nuts	10.0	Nuts	131100	4R	25300-D03-L2-C2-4R	25300-25
25300	D03	Nuts	10.0	Nuts	131100	CC	25300-D03-L2-C2-CC	25300-25
25300	D03	Nuts	10.0	Screw	131100	KT	25300-D03-L2-C3-KT	25300-25
25300	D03	Nuts	10.0	Screw	131100	SH	25300-D03-L2-C3-SH	25300-25
25300	D03	Nuts	10.0	Screw	131100	SM	25300-D03-L2-C3-SM	25300-25
25300	D03	Nuts	10.0	Screw	131100	TK	25300-D03-L2-C3-TK	25300-25

# RONIS 25300

Type	Direction ID	Lock Fixing	Panel Thickness	Cam Fixing	Cam Family	Key Series	Product Code	DOM Ronis Reference
25300	D03	Nuts	10.0	Spun-on	131100	4R	25300-D03-L2-C4-4R	25300-25
25300	D03	Nuts	10.0	Spun-on	131100	CC	25300-D03-L2-C4-CC	25300-25
25300	D03	Nuts	10.0	Spun-on	131100	KT	25300-D03-L2-C4-KT	25300-25
25300	D03	Nuts	10.0	Spun-on	131100	TK	25300-D03-L2-C4-TK	25300-25
25300	D04	Horseshoe Clip	0.8 - 1.2	Nuts	131100	4R	25300-D04-L1-C2-4R	25300-02
25300	D04	Horseshoe Clip	0.8 - 1.2	Nuts	131100	CC	25300-D04-L1-C2-CC	25300-02
25300	D04	Horseshoe Clip	0.8 - 1.2	Screw	131100	KT	25300-D04-L1-C3-KT	25300-02
25300	D04	Horseshoe Clip	0.8 - 1.2	Screw	131100	SH	25300-D04-L1-C3-SH	25300-02
25300	D04	Horseshoe Clip	0.8 - 1.2	Screw	131100	SM	25300-D04-L1-C3-SM	25300-02
25300	D04	Horseshoe Clip	0.8 - 1.2	Screw	131100	TK	25300-D04-L1-C3-TK	25300-02
25300	D04	Horseshoe Clip	0.8 - 1.2	Spun-on	131100	4R	25300-D04-L1-C4-4R	25300-02
25300	D04	Horseshoe Clip	0.8 - 1.2	Spun-on	131100	CC	25300-D04-L1-C4-CC	25300-02
25300	D04	Horseshoe Clip	0.8 - 1.2	Spun-on	131100	KT	25300-D04-L1-C4-KT	25300-02
25300	D04	Horseshoe Clip	0.8 - 1.2	Spun-on	131100	TK	25300-D04-L1-C4-TK	25300-02
25300	D04	Nuts	10.0	Nuts	131100	4R	25300-D04-L2-C2-4R	25300-02
25300	D04	Nuts	10.0	Nuts	131100	CC	25300-D04-L2-C2-CC	25300-02
25300	D04	Nuts	10.0	Screw	131100	KT	25300-D04-L2-C3-KT	25300-02
25300	D04	Nuts	10.0	Screw	131100	SH	25300-D04-L2-C3-SH	25300-02
25300	D04	Nuts	10.0	Screw	131100	SM	25300-D04-L2-C3-SM	25300-02
25300	D04	Nuts	10.0	Screw	131100	TK	25300-D04-L2-C3-TK	25300-02

# RONIS 25300

Type	Direction ID	Lock Fixing	Panel Thickness	Cam Fixing	Cam Family	Key Series	Product Code	DOM Ronis Reference
25300	D04	Nuts	10.0	Spun-on	131100	4R	25300-D04-L2-C4-4R	25300-02
25300	D04	Nuts	10.0	Spun-on	131100	CC	25300-D04-L2-C4-CC	25300-02
25300	D04	Nuts	10.0	Spun-on	131100	KT	25300-D04-L2-C4-KT	25300-02
25300	D04	Nuts	10.0	Spun-on	131100	TK	25300-D04-L2-C4-TK	25300-02
25300	D05	Horseshoe Clip	0.8 - 1.2	Nuts	131100	4R	25300-D05-L1-C2-4R	25300-03
25300	D05	Horseshoe Clip	0.8 - 1.2	Nuts	131100	CC	25300-D05-L1-C2-CC	25300-03
25300	D05	Horseshoe Clip	0.8 - 1.2	Screw	131100	KT	25300-D05-L1-C3-KT	25300-03
25300	D05	Horseshoe Clip	0.8 - 1.2	Screw	131100	SH	25300-D05-L1-C3-SH	25300-03
25300	D05	Horseshoe Clip	0.8 - 1.2	Screw	131100	SM	25300-D05-L1-C3-SM	25300-03
25300	D05	Horseshoe Clip	0.8 - 1.2	Screw	131100	TK	25300-D05-L1-C3-TK	25300-03
25300	D05	Horseshoe Clip	0.8 - 1.2	Spun-on	131100	4R	25300-D05-L1-C4-4R	25300-03
25300	D05	Horseshoe Clip	0.8 - 1.2	Spun-on	131100	CC	25300-D05-L1-C4-CC	25300-03
25300	D05	Horseshoe Clip	0.8 - 1.2	Spun-on	131100	KT	25300-D05-L1-C4-KT	25300-03
25300	D05	Horseshoe Clip	0.8 - 1.2	Spun-on	131100	TK	25300-D05-L1-C4-TK	25300-03
25300	D05	Nuts	10.0	Nuts	131100	4R	25300-D05-L2-C2-4R	25300-03
25300	D05	Nuts	10.0	Nuts	131100	CC	25300-D05-L2-C2-CC	25300-03
25300	D05	Nuts	10.0	Screw	131100	KT	25300-D05-L2-C3-KT	25300-03
25300	D05	Nuts	10.0	Screw	131100	SH	25300-D05-L2-C3-SH	25300-03
25300	D05	Nuts	10.0	Screw	131100	SM	25300-D05-L2-C3-SM	25300-03
25300	D05	Nuts	10.0	Screw	131100	TK	25300-D05-L2-C3-TK	25300-03

# RONIS 25300

---

Type	Direction ID	Lock Fixing	Panel Thickness	Cam Fixing	Cam Family	Key Series	Product Code	DOM Ronis Reference
25300	D05	Nuts	10.0	Spun-on	131100	4R	25300-D05-L2-C4-4R	25300-03
25300	D05	Nuts	10.0	Spun-on	131100	CC	25300-D05-L2-C4-CC	25300-03
25300	D05	Nuts	10.0	Spun-on	131100	KT	25300-D05-L2-C4-KT	25300-03
25300	D05	Nuts	10.0	Spun-on	131100	TK	25300-D05-L2-C4-TK	25300-03