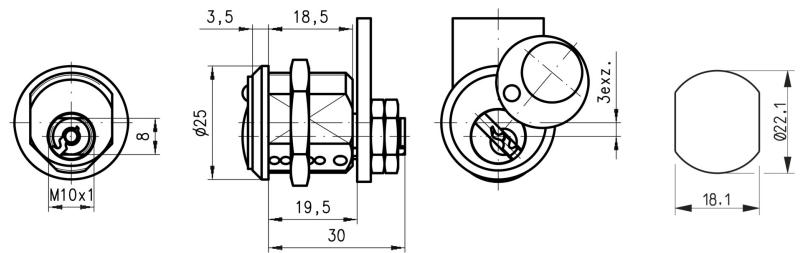
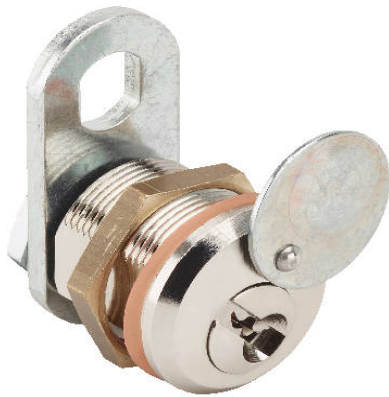


DOM 225173



SECURITY TYPE

Conventional Pin System

AVAILABLE LOCKS FIXINGS

| Lock Fixing ID | Lock Fixing |
|----------------|-------------|
| L2 | Nuts |

AVAILABLE KEY SERIES

| Key Series | Combinations | MK Possible |
|------------|--------------|-------------|
| 2C | 2600 | No |

AVAILABLE ROTATIONS

| Direction ID | Degrees | Direction | Key Extraction |
|--------------|---------|--------------|----------------|
| D24 | 90 | Left & Right | 2 |

TECHNICAL FEATURES

| | |
|---------------------|---------------|
| Standard Finish | Bright Nickel |
| Number of Keys | 2 |
| Standard Cam Family | 225 |
| Body Length | 19.50 |

APPLICATIONS OF USE

Wood Furniture, Metal Furniture, Letter Boxes, Toilet doors, Electrical Equipment, Retail, Storage

DOM 225173

ORDER INFORMATION

| Type | Direction ID | Lock Fixing | Panel Thickness | Cam Fixing | Cam Family | Key Series | Product Code | DOM Germany Cross Reference |
|-----------|--------------|-------------|-----------------|------------|------------|------------|------------------------|-----------------------------|
| 225-017-3 | D24 | Nuts | 15.0 | Nuts | 225 | 2C | 225-017-3-D24-L2-C2-2C | 225KON203174 |