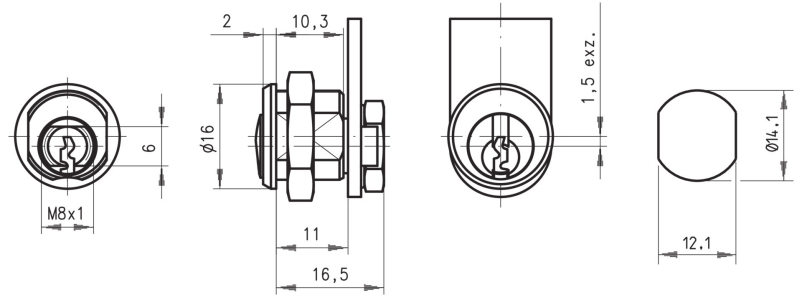


DOM 315011



SECURITY TYPE

Conventional Pin System

AVAILABLE LOCKS FIXINGS

Lock Fixing ID	Lock Fixing
L2	Nuts

AVAILABLE KEY SERIES

Key Series	Combinations	MK Possible
2A	68	No

AVAILABLE ROTATIONS

Direction ID	Degrees	Direction	Key Extraction
D02	90	Right Opening - Left Closing	1
D03	90	Left Opening - Right Closing	1

TECHNICAL FEATURES

Standard Finish	Bright Nickel
Number of Keys	2
Standard Cam Family	315
Body Length	11.00

APPLICATIONS OF USE

Wood Furniture, Metal Furniture, Letter Boxes, Hygiene, Electrical Equipment, Retail, Storage

DOM 315011

ORDER INFORMATION

Type	Direction ID	Lock Fixing	Panel Thickness	Cam Fixing	Cam Family	Key Series	Product Code	DOM Germany Cross Reference
315-01-1	D02	Nuts	7.5	Nuts	315	2A	315-01-1-D02-L2-C2-2A	315KON200942
315-01-2	D03	Nuts	7.5	Nuts	315	2A	315-01-2-D03-L2-C2-2A	315KON200945