



Assembly and operating instructions

for the 'LoQ' digital furniture lock of the system families:

- ENiQ®
- DOM Tapkey®

English translation of the original German instructions

1/2020



Contents

About this manual and manufacturer information	4
Keep the manual available	4
Text layout features	4
Mutually applicable documents	4
Warranty and liability	5
Copyright	5
Documentation Officer	5
Manufacturer's address	5
Information available online	6
Safety	7
Intended use	7
Ambient conditions	7
Fundamental safety information	7
Avoid risks of explosion	8
Risk of injury by swallowing small parts	8
Risk of injury when drilling holes or screwing	8
Risk of injury when securing the components	8
Avoid property damage and functional problems	8
Qualification of the staff	10
Layout features of warning notes	10
Layout features of notes indicating property damage	10
Description	11
Scope of delivery	11
Scope of delivery	13
The rotary knobs' coloured inserts	14
Levers	14
Available accessories	15
Furniture lock with narrow rotary knob	16
Furniture lock with round rotary knob	17
LED displays on the reading field	18
Task and function	19
Technical data	19
Unpacking and checking the scope of delivery	20
Storing the furniture lock	21
Assembly	22
Preparing installation	22
Assembly positions	23



Preparing the door	24
Preparing the wooden door	25
Preparing the metal door	27
Assembling the furniture lock.....	29
Using the furniture lock	35
Putting the furniture lock into operation	35
Initialising the furniture lock	36
Creating a transponder	36
LED displays and signals	36
Opening and closing the door.....	37
Cleaning the furniture lock	37
Changing batteries.....	38
Following use	42
Dismantling the furniture lock	42
Disposing of the furniture lock	42
Contact	43



About this manual and manufacturer information

These instructions will help you to securely assemble the 'LoQ' digital furniture lock. The 'LoQ' digital furniture lock is hereinafter referred to as the 'furniture lock' for short.

Keep the manual available

These instructions form an integral part of the furniture lock.

- ▶ Keep these instructions with the furniture lock.
- ▶ Ensure that the instructions are available for the assembly fitter / operator.
- ▶ Please include these instructions if you sell the furniture lock or pass it on in any other way.

Text layout features

Various elements of these instructions are provided with defined design features. This makes it easy for you to distinguish between the following elements:

Normal text

- First-level list
- ▶ Action steps
- ⓘ Tips contain additional information for assembly and operation.

Mutually applicable documents

The following document types are also applicable in particular:

- Data sheets
 - Assembly and operating instructions from third-party providers
 - Declarations of conformity or installation
 - Instructions about device functions, states and signalling
 - Programming instructions for the programming medium used
- ▶ Observe and follow the information from the applicable documents.



Warranty and liability

Our General Terms and Conditions apply as a matter of principle. Warranty and liability claims that are made if personal injury or property damage occurs are always excluded if they are attributable to one or more of the following causes:

- Improper use of the furniture lock
- Failure to observe the notices in these instructions
- Improperly performed assembly
- Improperly performed repairs
- Disasters caused by external influences and force majeure.

Copyright

This documentation may not be reproduced either in whole or in part, stored or transmitted, disclosed or translated in any form or by any means without the prior written consent of DOM Sicherheitstechnik GmbH & Co. KG.

This documentation is updated at regular intervals. The publisher is always grateful to receive information about any errors or suggestions regarding this documentation.

© DOM Sicherheitstechnik GmbH & Co. KG, Wesseling Strasse 10–16,
50321 Brühl, Germany

Documentation Officer

DOM Sicherheitstechnik GmbH & Co. KG
Product Management Department
Wesseling Strasse 10–16
50321 Brühl, Germany

Manufacturer's address

DOM Sicherheitstechnik GmbH & Co. KG
Wesseling Straße 10–16
D-50321 Brühl
Telephone: +49 (0) 2232 7040
Telefax: +49 (0) 2232 704 375
Email: dom@dom-group.eu
Internet: www.dom-security.com



Information available online

You can download these instructions and other information about the LoQ family on the product details page at the following web address:
www.dom-security.com



Safety

Intended use

The furniture lock is used to lock and open doors on furniture. The ENiQ and DOM Tapkey system families are based on RFID (radio frequency identification) technology.

The furniture lock can be installed in metal and wooden doors measuring up to 24 mm thick.

Only people with an authorised transponder can open or lock the furniture lock.

Proper use includes reading and understanding these instructions as well as observing and following all the information provided in these instructions, particularly the safety notices. Any other use is expressly considered to be improper and will render warranty and liability claims null and void.

Use in areas where there is a risk of explosion in particular is considered to be improper.

Ambient conditions

Ensure that the furniture lock is only used under the following ambient conditions:

- Temperature range: -25 °C to $+65\text{ °C}$
- Air humidity: 20% to 99% (non-condensing).

Fundamental safety information

The furniture lock is built according to the state of the art and the recognised safety regulations. When working with and on the furniture lock, however, residual risks that can cause danger to life and limb remain. The following safety notices must therefore be observed and followed.



Avoid risks of explosion

The furniture lock is not suitable for use in areas where there is a risk of explosion. Assembling and operating the furniture lock in an area where there is a risk of explosion can lead to serious injuries or death.

- ▶ Only assemble and operate the handles in areas where there is no explosive atmosphere.

Risk of injury by swallowing small parts

Children can become injured after swallowing small parts.

- ▶ Make sure that small parts e.g. locking media or screws are kept out of the reach of children.

Risk of injury when drilling holes or screwing

Risk of damage to eyes as a result of drilling dust or chips flying around.

- ▶ Wear safety glasses.
- ▶ Use a device to extract the drilling dust or chips.

Danger of injury to fingers or hands due to slipping during drilling.

- ▶ Wear suitable safety gloves.
- ▶ Observe and follow the instructions in the documents for the drill.

Danger of injury to fingers or hands due to slipping during screwing.

- ▶ Wear suitable safety gloves.

Risk of injury when securing the components

Risk of hand injuries due to slipping when screwing down the components or coming into contact with sharp edges.

- ▶ Wear suitable safety gloves.

Avoid property damage and functional problems

Property damage can occur as a result of incorrect storage for an extended period of time.

- ▶ Store the furniture lock and its components in the original packaging in a dry and dust-free place.

Property damage can occur as a result of the furniture lock being assembled and operated inappropriately.

- ▶ Read these instructions carefully before assembling the furniture lock and putting it into operation.
- ▶ Follow the instructions one step at a time.
- ▶ Never touch the furniture lock's electronic components.



- ▶ Protect the parts of the furniture lock against moisture.
- ▶ Handle the furniture lock carefully to prevent scratches from forming.
- ▶ Secure the screws using the specified torque.

The date and time may be lost once the batteries are changed.

The date and time being lost can interfere with / block correct use of permissions with schedules.

- ▶ After changing batteries, use appropriate programming equipment to check whether the date and time are still up-to-date.
- ▶ Correct the date and time if necessary.

Reduced furniture lock range possible due to magnetic objects in the immediate vicinity of the furniture lock.

- ▶ Ensure that no magnetic objects are located in the immediate vicinity of the furniture lock.

Malfunction caused by two reading fields influencing one another.

If the distance is too short, an authorised closing device can be delayed or remain undetected.

- ▶ Assemble furniture locks at least 15 cm apart from one another.

Malfunction caused by external systems being present.

External systems can emit interference fields or interfering signals. This can cause an authorised closing device to be delayed or remain undetected. Programming of the furniture lock can also be disturbed.

- ▶ Ensure that external systems do not influence the furniture lock's function.

Risk of property damage as a result of incorrect care or cleaning.

- ▶ Do not lubricate any parts of the furniture lock.
- ▶ Clean the housings and closing devices with a soft, damp cloth; do not use any cleaning agents.





Qualification of the staff

People working on and with the furniture lock must have basic manual skills so that they can safely make screw connections and drill holes if necessary.

People putting the furniture lock into operation must understand how it works and how the individual components interact.

Layout features of warning notes

 CAUTION	
	Notices with the word CAUTION warn of a situation which can lead to light or moderate injuries.

Layout features of notes indicating property damage

<i>ATTENTION!</i>	
	These notices warn of a situation that leads to property damage or malfunctions.

Description

Scope of delivery

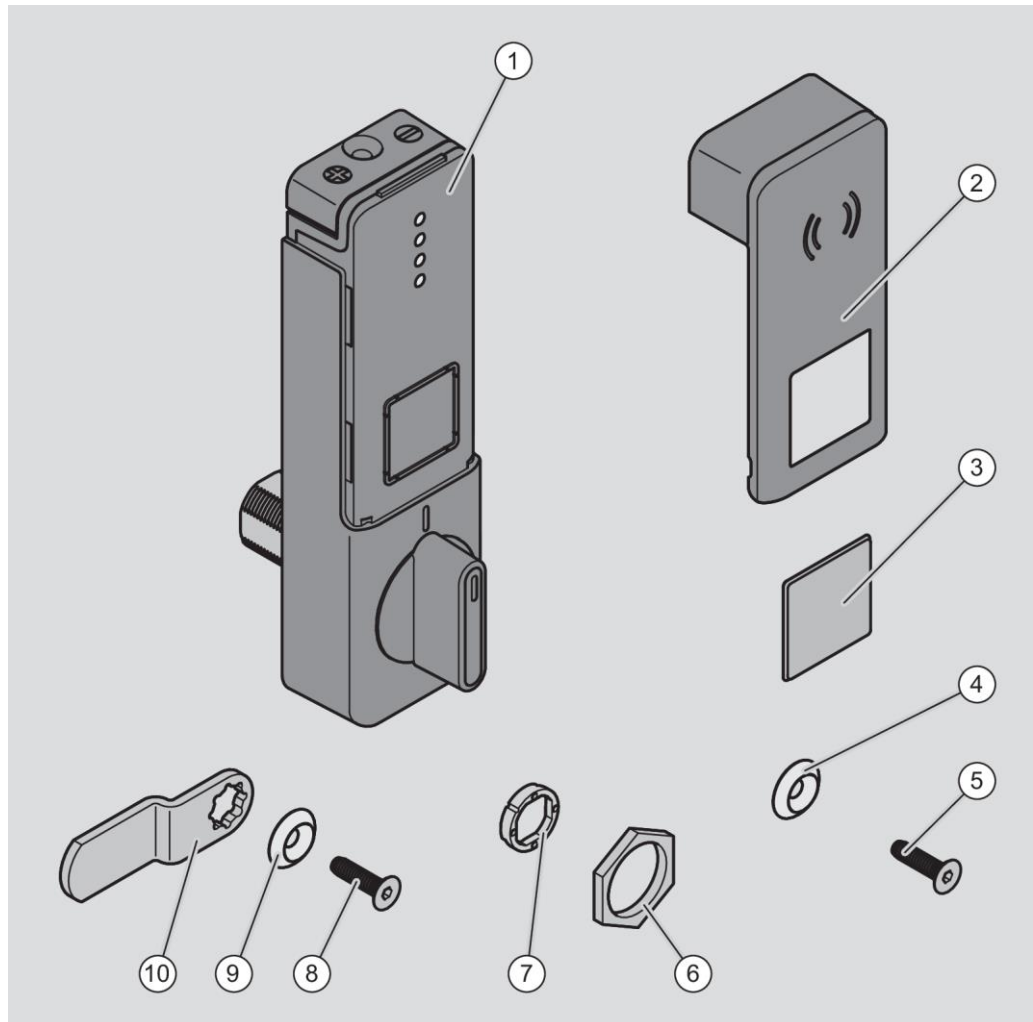


Fig. 1: Furniture lock with narrow rotary knob

No.	Designation
1	Furniture lock
2	Battery compartment cover
3	Logo plate
4	Washer for securing the furniture lock
5	Screw for securing the furniture lock. This screw is included in the scope of delivery in the following four sizes for different door thicknesses: M4 × 16 mm (1–7 mm) M4 × 25 mm (8–13 mm) M4 × 30 mm (14–18 mm) M4 × 35 mm (19–24 mm)
6	M19 hexagon nut
7	Adjustment ring for the closing direction



Description

8	Screw for securing the lever
9	Washer for securing the lever
10	Lever (shape depends on the order)
-	2 lithium, AAA, 1.5 V batteries (not shown)

Scope of delivery

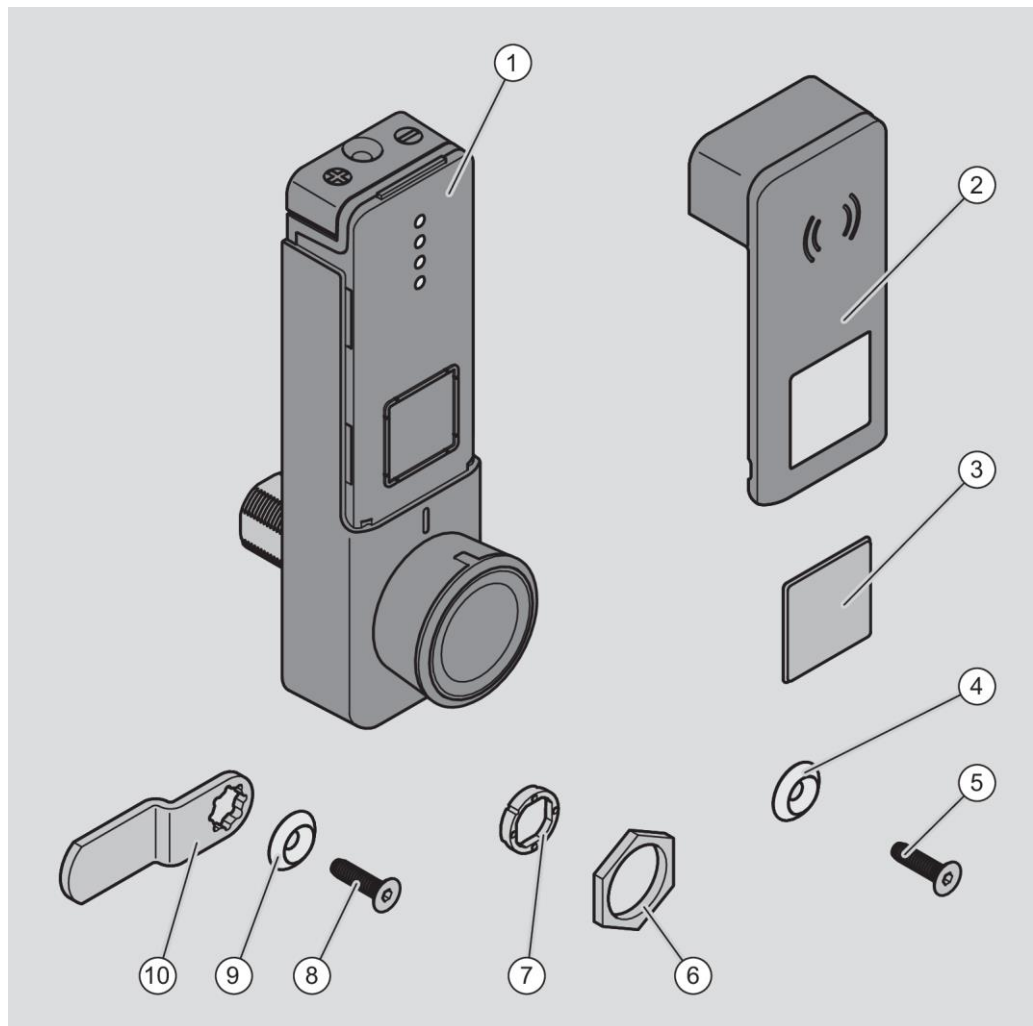


Fig. 2: Furniture lock with round rotary knob

No.	Designation
1	Furniture lock
2	Battery compartment cover
3	Logo plate
4	Washer for securing the furniture lock
5	Screw for securing the furniture lock. This screw is included in the scope of delivery in the following four sizes for different door thicknesses: M4 × 16 mm (1–7 mm) M4 × 25 mm (8–13 mm) M4 × 30 mm (14–18 mm) M4 × 35 mm (19–24 mm)
6	M19 hexagon nut
7	Adjustment ring for the closing direction
8	Screw for securing the lever
9	Washer for securing the lever



Description

10	Lever (shape depends on the order)
-	2 lithium, AAA, 1.5 V batteries (not shown)

The rotary knobs' coloured inserts

The narrow or round rotary knobs are equipped with coloured inserts. The coloured inserts are available in the following colours:

- White
- Grey
- Pink
- Green
- Yellow
- Blue
- Red

The scope of delivery only includes the coloured insert that you specified when you placed your order.

Levers

The levers are available in different variants. Only the lever that you specified when you placed your order is included in the scope of delivery.



Available accessories

The following accessories are available:

- Lever in different variants
- Logo plates
- Coloured inserts in various colours
- Retaining plate for wooden door
- Lithium, AAA, 1.5 V batteries

The following accessories are available as options:

- Master card, programming card, RF wake-up card, RF online card, battery change card, service maintenance card, permanently open card, permanently closed card in the ISO credit card format, inspection card (for multi-user mode)
- Transponders in various designs (tag, ISO card, clip tag, etc.)
- Tapkey app (DOM Tapkey family only)
- ENiQ app (ENiQ family only)
- 'ENiQ Access Management' for PC or laptop
- PC desktop reader for reading and writing closing devices in software
- ENiQ EasyFlex Booklet (for the ENiQ family only)

Please refer to the current price list for other accessories.

Furniture lock with narrow rotary knob

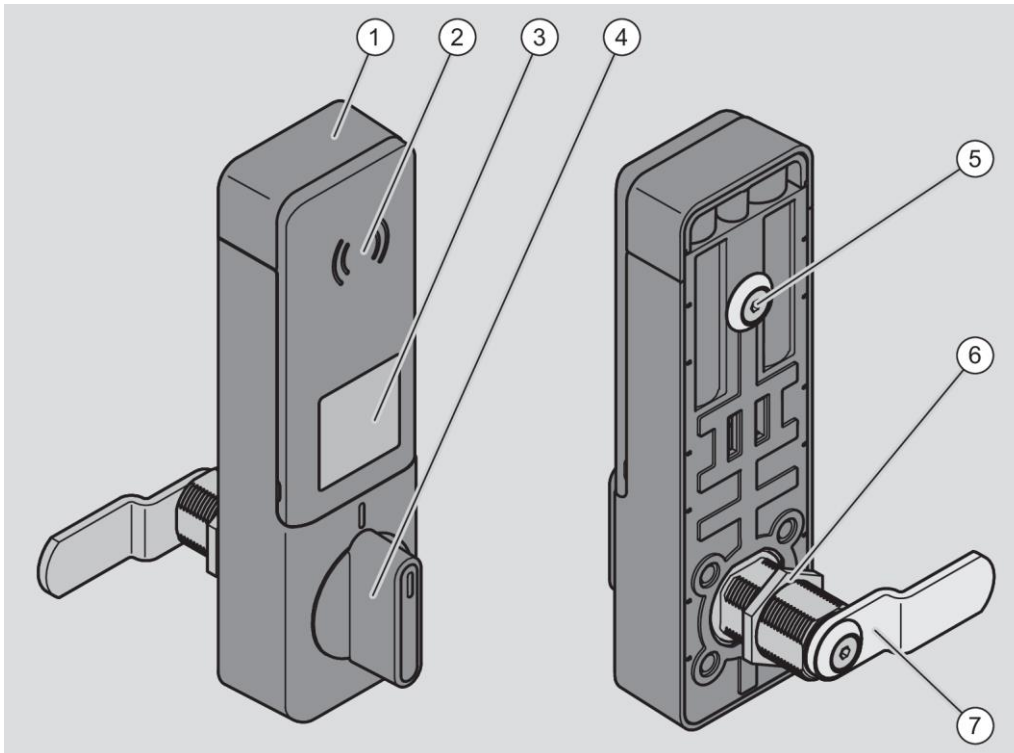


Fig. 3: Furniture lock with narrow rotary knob

No.	Designation
1	Battery compartment (covered)
2	Reading field with LED display
3	Logo plate
4	Rotary knob: In the '1' position: Door closed Rotated to approx. 90 degrees: Door open
5	Screw with the washer for securing the furniture lock
6	Hexagon nut (M19)
7	Lever: In the horizontal position: Door closed In the vertical position: Door open

Furniture lock with round rotary knob

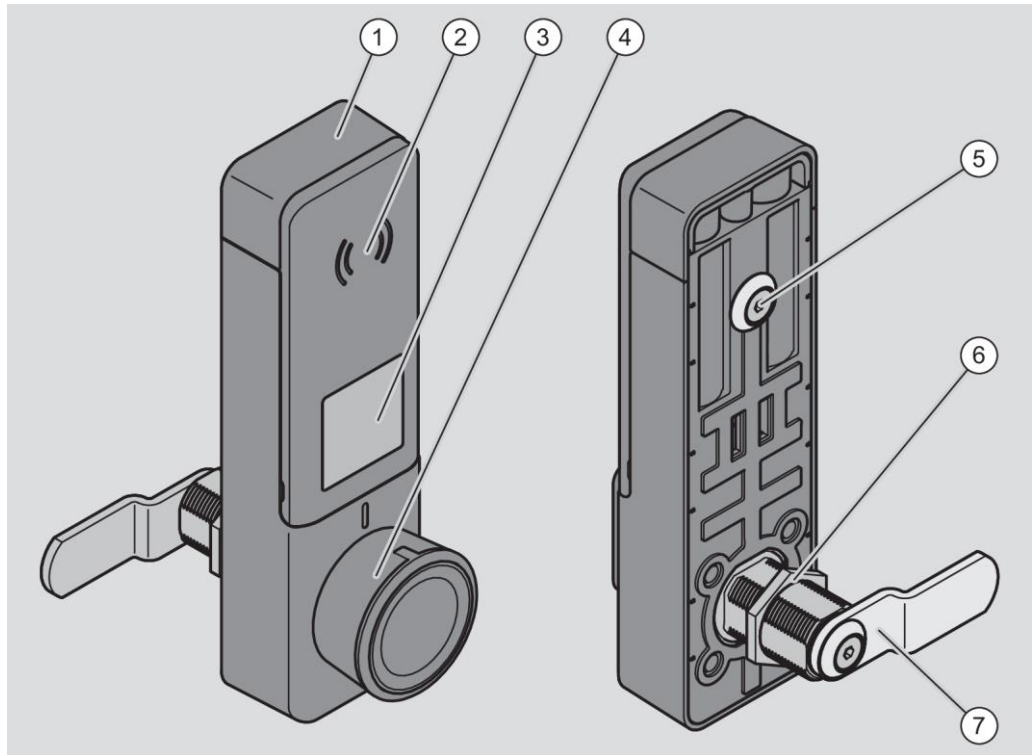


Fig. 4: Furniture lock with round rotary knob

No.	Designation
1	Battery compartment (covered)
2	Reading field with LED display
3	Logo plate
4	Rotary knob: In the 'I' position: Door closed Rotated to approx. 90 degrees: Door open
5	Screw with the washer for securing the furniture lock
6	Hexagon nut (M19)
7	Lever: In the horizontal position: Door closed In the vertical position: Door open

LED displays on the reading field

Four LEDs (1, 2, 3, 4) are placed one above the other on each furniture lock's reading field. The LEDs can individually, consecutively or simultaneously light up in different colours. This is how the LEDs indicate permissions, operating states and errors. An acoustic signal can also be emitted.

Notices relating to the signals and the corresponding device states can be found in the separate instructions entitled 'Device functions, states and signalling'.

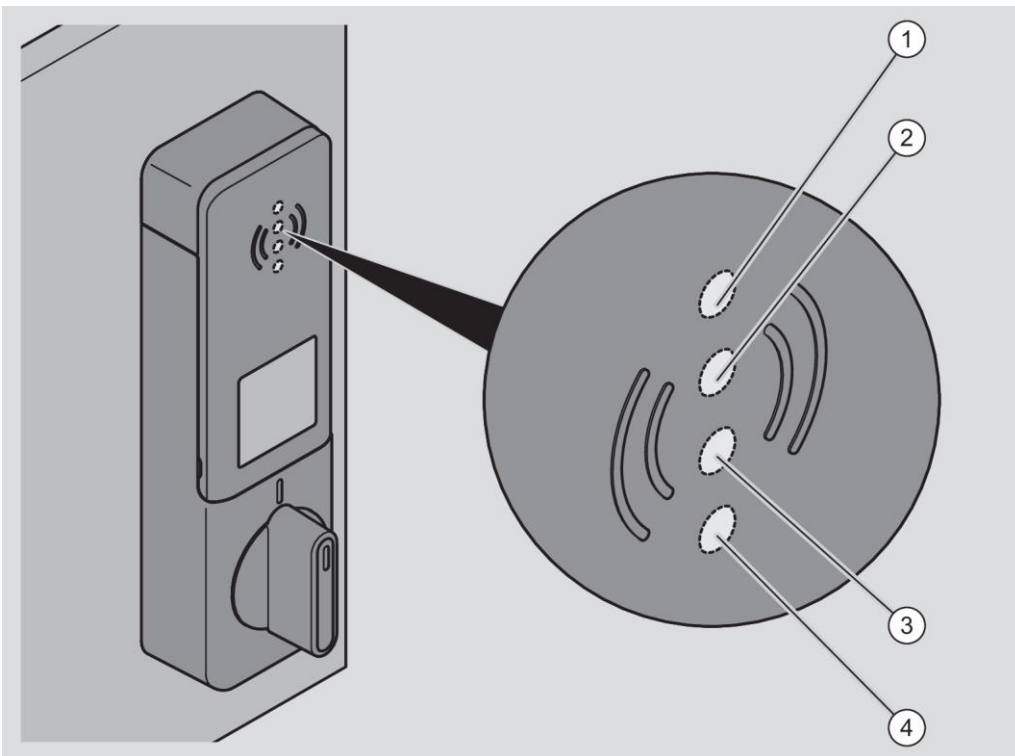


Fig. 5: LED displays

The following colours are possible:

- Green
- Yellow
- Red
- Blue
- White
- Magenta
- Cyan

Task and function

Task

The furniture locks in the LoQ family are used to lock and open furniture. Authorisation management is based on RFID (radio frequency identification) technology. Only transponders with the relevant permission (authorised transponders) enable the furniture to be locked and opened for an adjustable time and period.

Areas of application include the likes of lockers in fitness studios and swimming pools and cupboards in hospitals, schools or offices.

The furniture lock can be installed horizontally and vertically in metal and wooden doors. An installation hole in the relevant shape must be provided for this purpose. A hole may also have to be drilled to secure the furniture lock.

The closing direction depends on the door stop (left or right) and can be determined during installation with the adjustment ring.


The electronics built into the furniture lock can be put into operation with the master card (ENiQ) or with the owner card (Tapkey).

Function

The locking mechanism (e. g. lever) on the furniture lock is only released if a transponder with a relevant permission (an authorised transponder) is held to the reading field. Data is transmitted inductively (via RFID) between the transponder and the reading field by means of a coil that is present in the reading field and in the transponder. Only one of the devices (reading field or transponder) has to have a power supply to guarantee function. In the LoQ family, power is supplied by the electronic furniture lock's battery. Batteries are changed by removing the cover. The battery holder can be removed by loosening a screw.

The rotary knob is directly connected to the locking mechanism (e. g. lever). The lock unlocks if an authorised transponder is held to the reading field. The door can be opened by turning the rotary knob. To lock the door, the knob is turned back into the 'Closed' end position.

Technical data

-  The current technical instructions and product information can be found on the website at www.dom-security.com.



Unpacking and checking the scope of delivery

- ▶ Remove the furniture lock from the original packaging.
- ▶ Keep the original packaging for subsequent use.

The original packaging will be necessary for subsequent storage or sending after use.

- ▶ Check whether all of the furniture lock's components were supplied.
- ▶ Check whether all accessories ordered were supplied.
- ▶ Check all parts supplied to ensure that they are in perfect condition.
- ▶ Contact the manufacturer if parts are missing, damaged or supplied with the incorrect dimensions.



Storing the furniture lock

Proceed as follows to store the furniture lock prior to assembly or following use:

- ▶ Store the furniture lock in the original packaging in a dry and dust-free place.
- ▶ Store the furniture lock, and particularly its electronics, at least 15 cm away from metallic objects, transponder coils and card coils.



Assembly

Preparing installation

The furniture locks are assembled in the same way regardless of rotary knobs and levers. Proceed as follows in principle for assembly:

- Check that all parts are complete and in perfect condition.
- Determine the assembly position (see page 23 regarding this matter).
- If necessary, prepare the door for assembly (see page 24 regarding this matter).
- Check that the furniture lock is working properly.
- Provide the required tool and additional material.

You require the following tools:

- Drill for drilling the corresponding assembly holes
- Allen key (2.5 mm) for securing the screws
- Open-end spanner (22 mm) for securing the hexagon nut

Assembly positions

The assembly position depends on the right door stop (A) or the left door stop (B). The following assembly positions are possible depending on the door stop and door size:

- Vertical (rotary knob at the bottom, rotary knob at the top)
- Horizontal (rotary knob on the left, rotary knob on the right)

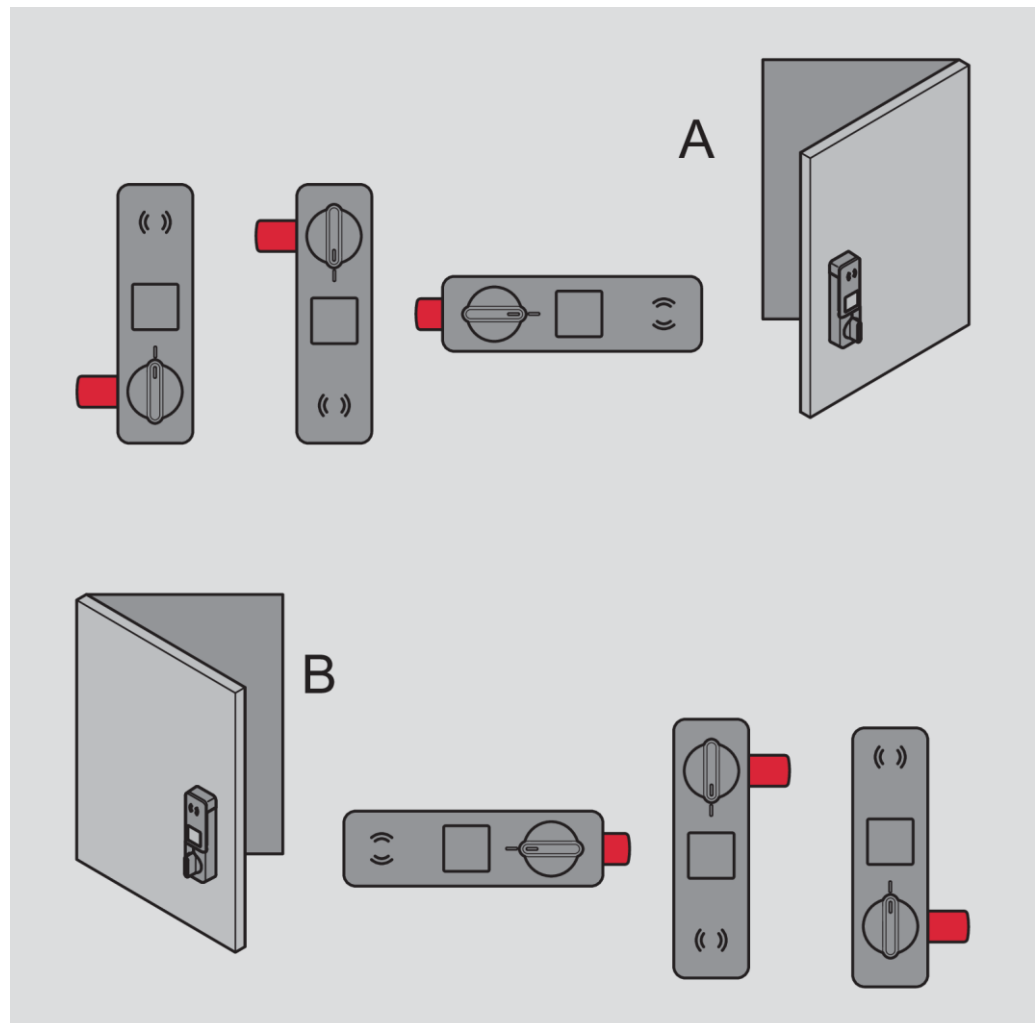


Fig. 6: Right door stop (A) and left door stop (B) assembly positions

The lever's assembly direction (closed position) is opposite the door stop side (hinge side).

- i** The figures below illustrate how the furniture lock is assembled with a narrow rotary knob in the vertical position (rotary knob at the bottom, door stop on the left). The furniture lock assembly steps are the same regardless of the rotary knob position and variant.





Preparing the door

To be able to install the furniture lock in a metal or wooden door, an installation hole in the appropriate shape must be available. Additionally, the door in question must also have a second hole for securing the furniture lock.

- ▶ If the holes are present, proceed as follows as described from page 29 onwards.
- ▶ If the holes are not present, prepare the door as described below.

Preparing the wooden door

⚠ CAUTION	
	<p>Risk of eye injuries through drilling dust.</p> <ul style="list-style-type: none">▶ Wear safety goggles.▶ Use equipment to extract the drilling dust.
⚠ CAUTION	
	<p>Risk of finger or hand injuries caused by slipping during drilling or screwing work.</p> <ul style="list-style-type: none">▶ Wear suitable safety gloves.▶ Observe and follow the notices provided in the drilling machine documentation when drilling.

Proceed as follows to prepare the wooden door:

- ▶ Mark the position of the installation hole (2).
- ▶ Mark the position of the second hole (1).
- ▶ Pay attention to the specified sizes.
- ▶ Drill the marked installation hole (2) and the marked hole (1).
- ▶ Drill the marked hole (1).
- ▶ Remove the chips and drilling dust.

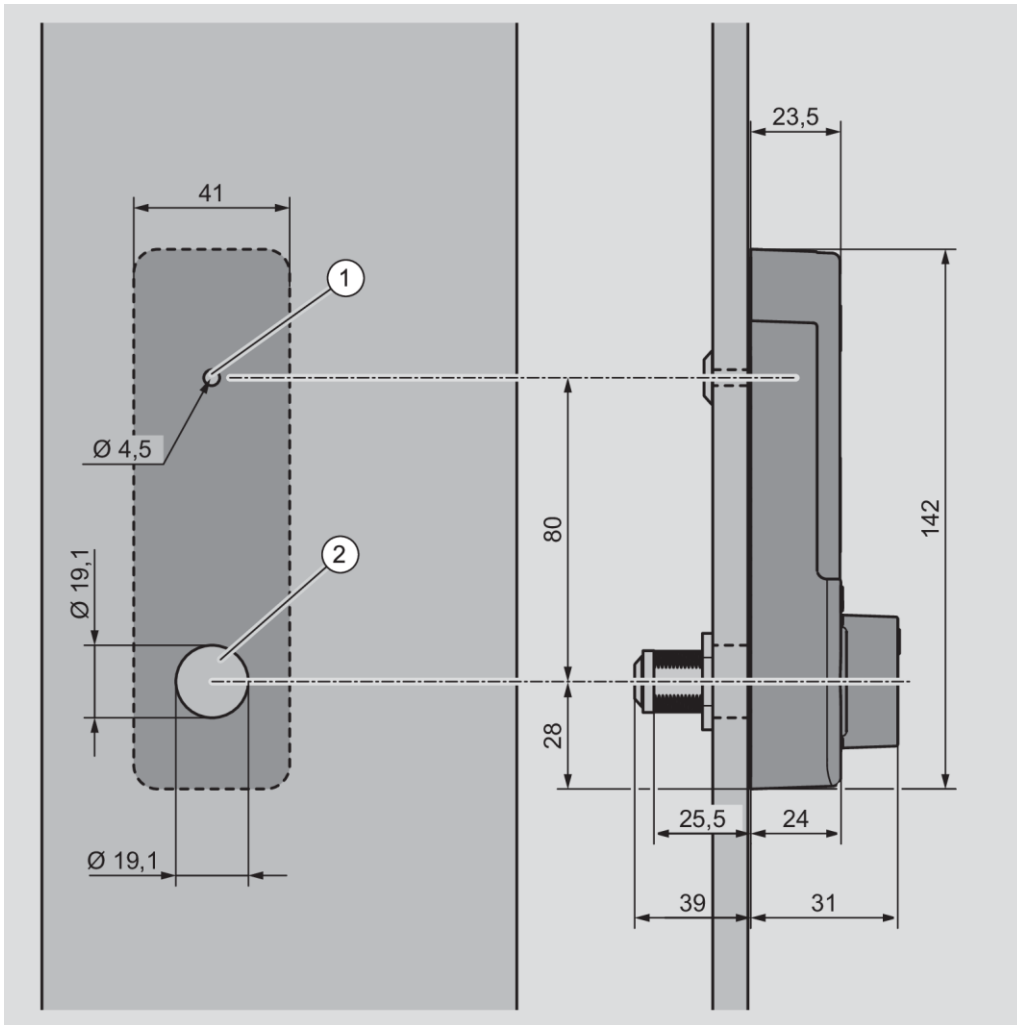




Fig. 7: Preparing the wooden door

Preparing the metal door

⚠ CAUTION	
	<p>Risk of eye injuries through drilling dust.</p> <ul style="list-style-type: none"> ▶ Wear safety goggles. ▶ Use equipment to extract the drilling dust.
⚠ CAUTION	
	<p>Risk of finger or hand injuries caused by slipping during drilling or screwing work.</p> <ul style="list-style-type: none"> ▶ Wear suitable safety gloves. ▶ Observe and follow the notices provided in the drilling machine documentation when drilling.
ATTENTION!	
	<p>Installation may not be possible in the case of metal doors with incorrect holes.</p> <ul style="list-style-type: none"> ▶ Pay attention to the specified sizes when marking or drilling.

Proceed as follows to prepare the metal door:

- ▶ Mark the position of the installation hole (2).
- ▶ Mark the position of the second hole (1).
- ▶ Pay attention to the sizes specified in the figure.
- ▶ Drill the marked installation hole (2).
- ▶ Drill the marked hole (1).
- ▶ Remove the chips and drilling dust.

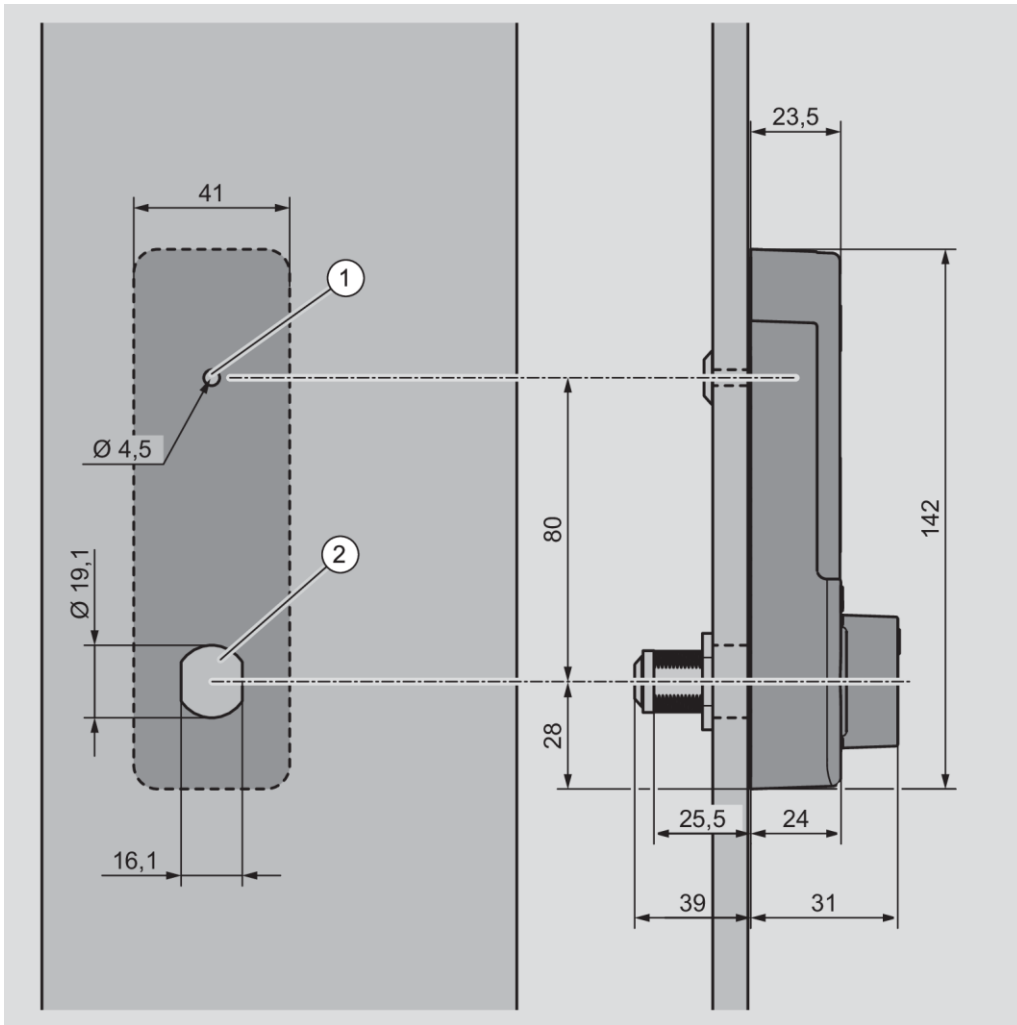


Fig. 8: Preparing the metal door

Assembling the furniture lock

⚠ CAUTION



Risk of hand or finger injuries due to slipping when fastening the furniture lock.

- ▶ Wear suitable safety gloves.

If the available installation hole (1) should be larger, you can prepare the door with an optional retaining plate. Proceed as follows in this regard:

- ▶ Attach the optional retaining plate (2) to the inside using the installation hole (1).
- ▶ Secure the optional retaining plate (2) with two screws. To do this, tighten the screws.
- ▶ Remove the chips if necessary.

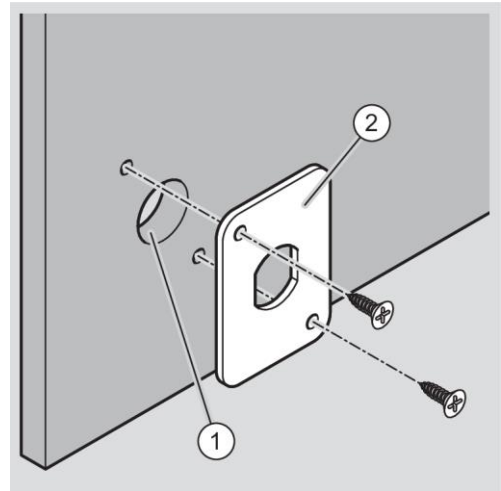


Fig. 9: Attaching the retaining plate

i A retaining plate may only be required for wooden doors.

- ▶ Carefully slide the furniture lock (3) through the installation hole (1).
- ▶ Align the furniture lock so that the top edge of the housing is horizontal.
- ▶ Press the furniture lock against the door leaf and hold it with one hand.

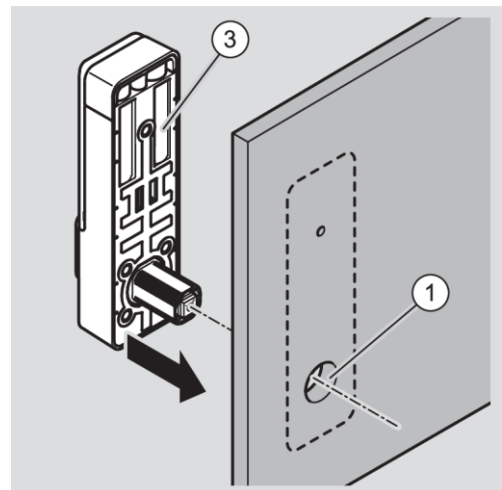


Fig. 10: Sliding the furniture lock through the installation hole

ATTENTION!	
	<p>Damage to the electronics built into the furniture lock due to using screws that are too long with thinner door thicknesses.</p> <p>▶ Only use the screw intended for the respective door thickness.</p>

- ▶ Select one of the screws included in the scope of delivery for securing the furniture lock.

Information about the corresponding door thicknesses can be found in the section entitled 'Scope of delivery' from page 11 onwards.

- ▶ Insert the relevant screw (6) into the hole (4) along with the washer (5).
- ▶ Tighten the screw (6) with a max. torque of 3 Nm using the Allen key (2.5 mm).
- ▶ Place the M19 hexagon nut (8) on the rear of the CAM adapter (7) thread.
- ▶ Tighten the M19 hexagon nut (8) with a max. torque of 5 Nm using the open-end spanner (22 mm).

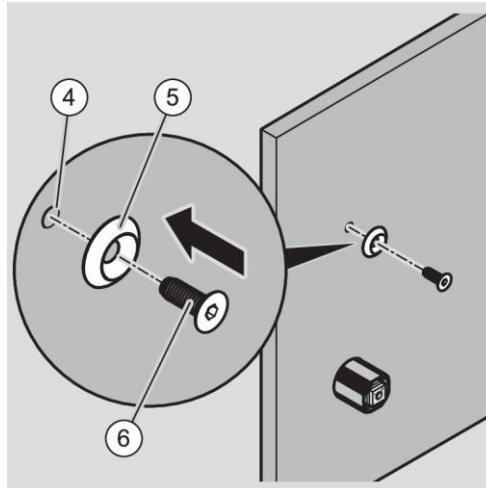


Fig. 11: Inserting the screw

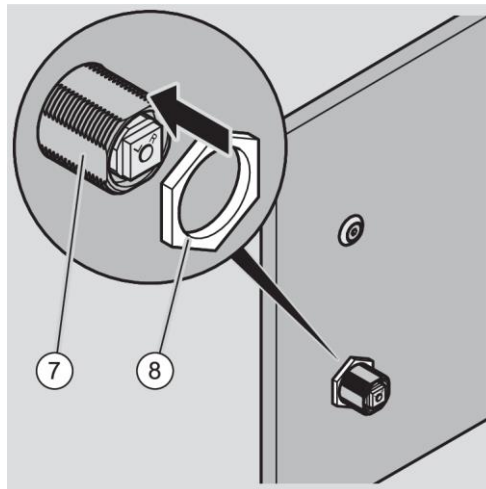


Fig. 12: Fitting the hexagon nut

Once you have secured the furniture lock on the door, you can set the closing direction. The closing direction depends on the door stop (left or right).

- ▶ Turn the rotary knob (10) to the 'I' position (9).

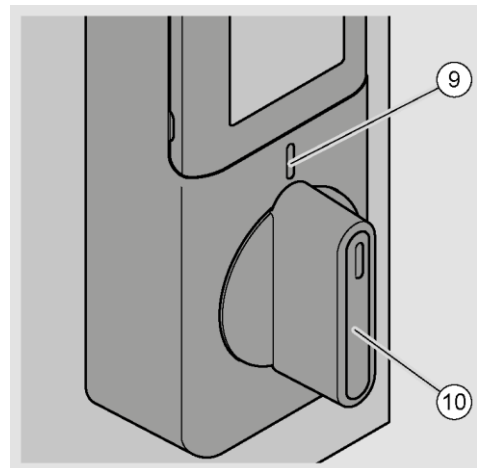


Fig. 13: Rotary knob in the closed position

- ▶ Observe the installation position on the adjustment ring while doing so.

The adjustment ring's nose (12) must be inserted into the CAM adapter's recess (11).

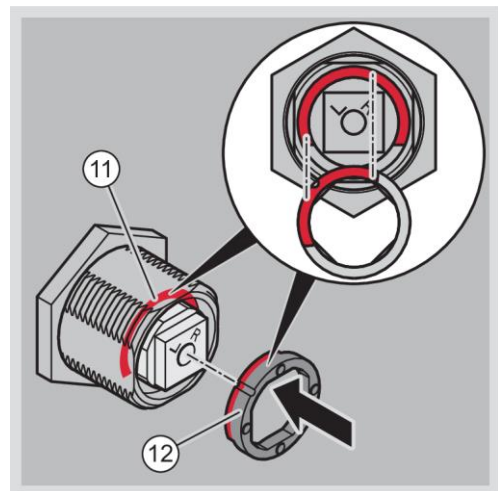


Fig. 14: The adjustment ring's installation position

- ▶ Insert the adjustment ring (14) into the CAM adapter (15) as shown.

The mark (13) on the adjustment ring indicates the rotary knob's direction of rotation. The knob's direction of rotation is typically selected so that it faces the door stop side.

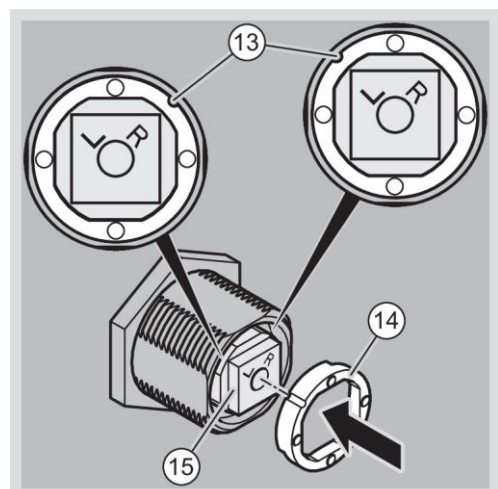


Fig. 15: Determining the lever position



- ❶ The adjustment ring limits the rotary travel to max. 90°.
- ❶ The adjustment ring determines the furniture lock's closing direction in conjunction with the lever.

► Now determine the required lever position.

The lever alignment is viewed from the outside of the door.

If the door stop is on the left, the lever will point to the right (16) when viewed from the outside.

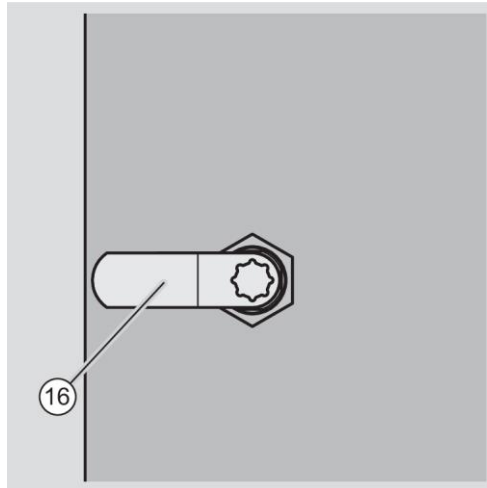


Fig. 16: Lever in the closed position (inside of the door)

► If the door stop is on the right, the lever will point to the left (16) when viewed from the outside.

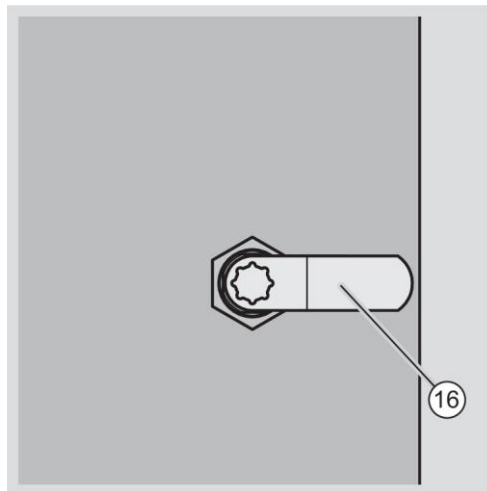


Fig. 17: Lever in the closed position (inside of the door)

- ❶ Contact your specialist dealer or DOM partner if the supplied lever does not fit in your installation situation.

- ▶ Ensure that the rotary knob is in the 'I' (closed) position.
- ▶ Position the lever (16) in the required 'closed' position on the CAM adapter (17).
- ▶ Now secure the lever (16) with the washer (18) and the screw (19).
- ▶ To do this, tighten the screw (19) with the Allen key (2.5 mm) with a max. torque of 3 Nm.

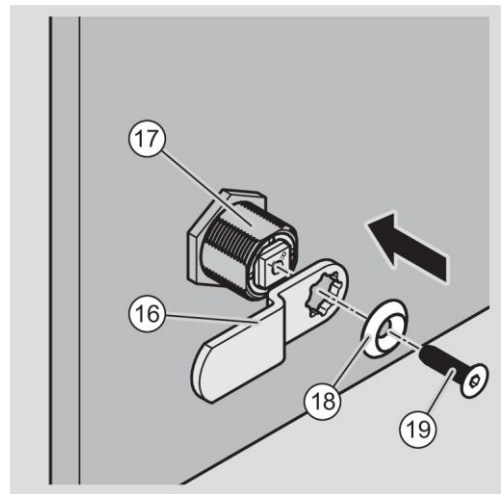


Fig. 18: Assembling the lever

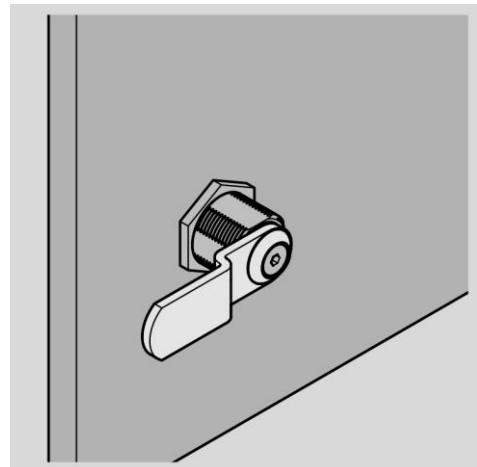


Fig. 19: Final assembly condition

Once you have secured the lever, you can perform a function test. You can perform this test without any restriction until the furniture lock is actually put into operation. Proceed as follows in this regard:

- ▶ Turn the rotary knob by 90 degrees.

The lever is in the vertical position. The door can now be opened.

Proceed as follows if you have assembled the furniture lock properly:

- ▶ If necessary, attach the logo plate (21) to the corresponding position (20) with the inscription facing outwards.

i Typically, the logo plate is already assembled in the ordered alignment.

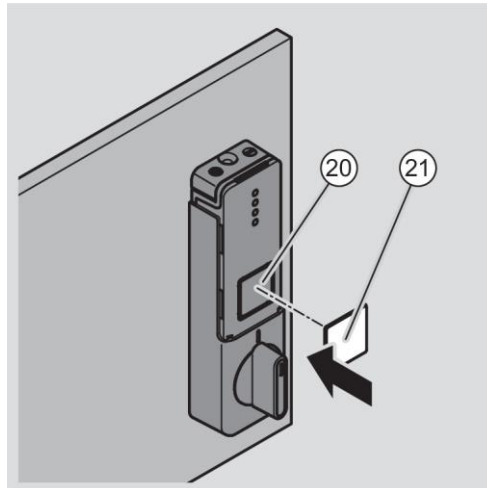


Fig. 20: Attaching the logo plate

- ▶ Clip the battery compartment cover (23) onto the furniture lock (22).
- ▶ To do this, correctly press the cover (23) in the direction of the housing.

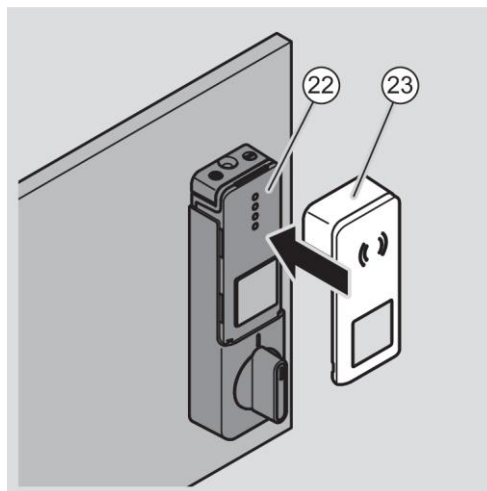


Fig. 21: Clipping the cover onto the furniture lock

Using the furniture lock

Putting the furniture lock into operation

- ① To be able to put the furniture lock into operation without using the app or software, you require the master card to adjust the affiliation with the system. The affiliation with the system must be adjusted once for each furniture lock. Ensure that the master card is protected against unauthorised access. If the master card is lost, you must have the furniture lock reset in the factory (costs may be incurred) and reprogram it. Contact your dealer for this purpose.
- ① Programming with the master card and the programming card is carried out on the furniture lock. Only perform programming when the door is open, so that you do not lock yourself out.
- ① The furniture lock automatically detects transponders when they approach the furniture lock's reading field. In rare cases, interference fields or the use of transponders that are not approved by DOM Sicherheitstechnik can lead to transponders not being recognised.
 - Only use transponders that DOM Sicherheitstechnik has approved for use with the furniture lock.
 - Hold the transponder directly to the furniture lock's reading field.
 - If the transponder is not detected despite this, ensure that no interfering influences are having an effect on the furniture lock.
- ① The furniture lock is in the 'permanently open' mode when delivered. You can open the door without holding a transponder to the reading field.
 - You must put the furniture lock into operation to use the furniture lock's security function.
- ① Further information about putting the device into operation, programming and use can be found in the supplied user instructions for the programming medium used.
- ① The furniture lock of the DOM Tapkey system family is put into operation in a different way from the instructions described here. How the furniture lock is put into operation is described in the DOM Tapkey app instructions.



Initialising the furniture lock

Proceed as follows to initialise the furniture lock:

- ▶ Briefly hold the master card directly in front of the furniture lock's reading field.

The yellow LEDs light up once for a long time. Then the furniture lock signals its initialisation by means of the short red, green, yellow and blue signal sequence and then by the long yellow signal sequence. The furniture lock restarts following successful initialisation. The furniture lock can then be programmed with the master card, programming card or software and app products.

Creating a transponder

- ❗ The reading field automatically detects transponders when they approach the reading field. In rare cases, environmental influences in the form of interference fields or the use of transponders that are not approved by DOM Sicherheitstechnik can lead to transponders not being detected.

Proceed as follows to create the transponder:

- ▶ Hold the master card in front of the respective reading field.

The LEDs light up blue once for a long time.

The LEDs briefly light up green. The master card is accepted.

- ▶ Briefly and individually hold each transponder directly in front of the respective reading field and wait briefly for the signalisation.

The LEDs each briefly light up green. Addition of the transponder is signalled. Programming is completed after approx. five seconds (time-out) or by showing the master card (MID) again. The LEDs light up blue for a long time.

LED displays and signals

You can use the furniture lock when you have completed initialisation and programming.

Signalling / visualisation of whether the transponder is authorised (green) or unauthorised (red) is performed by the corresponding LED display (see 18 regarding this matter).

Opening and closing the door

You can use the furniture lock when you have completed the initialisation process. Proceed as follows in this regard:

The door is closed.

- ▶ Hold the authorised transponder directly in front of the reading field, approx. 1 cm away from it.

A green LED chaser light signals the release for the preset release time (basic setting: 5 seconds). The rotary knob is released during this time. The door can be opened during this time.

- ▶ Turn the rotary knob (2) by 90 degrees to open the door.

The green LEDs go out once the release time (basic setting: approx. 5 seconds) has elapsed.

- ▶ Turn the rotary knob to the 'I' position (1) to close the door.

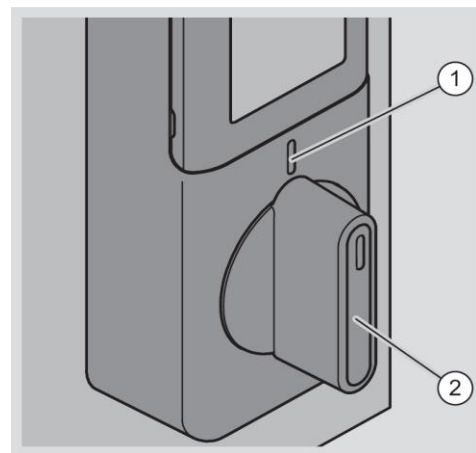


Fig. 22: Opening and closing the door

Cleaning the furniture lock

ATTENTION!	
	<p>Damage to the furniture lock caused by using incorrect cleaning agents.</p> <ul style="list-style-type: none"> ▶ Clean the housing and closing devices with a slightly damp chamois; do not use any cleaning agents.

- ▶ If necessary, clean the furniture lock with a slightly damp chamois; do not use any cleaning agents.
- ▶ Ensure while doing so that no moisture can make its way into the furniture lock.

Changing batteries

i You can find information about the service life of the batteries which are supplied in the associated data sheets. The batteries can be supplied as accessories or they are available from specialist retailers.

Batteries which are not acquired from DOM may have a shorter service life. In this case DOM will not provide any guarantee for the battery life or the number of possible locking cycles.

The LEDs on the reading field display too low a level of the batteries as well as operating information. All four LEDs light up simultaneously for this purpose 1 – 2 – 3 – 4.

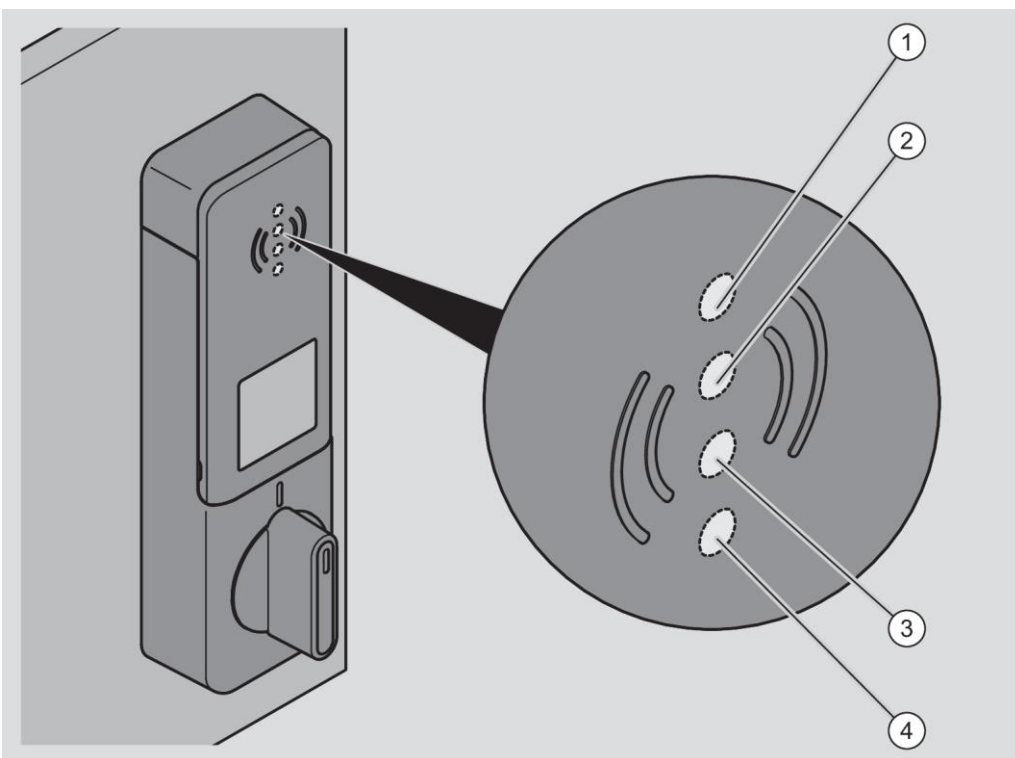


Fig. 23: LED displays

The furniture lock is equipped with a three-level warning system.

Battery warning level 1

If the batteries will run flat soon, battery warning level 1 will be displayed as soon as you hold a transponder to the reading field. At battery warning level 1, all four LEDs light up as follows:

- All LEDs light up yellow for a long time
- All LEDs briefly light up red
- All LEDs briefly light up yellow
- All LEDs briefly light up red
- All LEDs briefly light up yellow
- All LEDs briefly light up red
- All LEDs light up yellow for a long time



Fig. 24: Indicators at battery warning level 1

The LEDs then briefly light up green one after the other. You can open the door. You can operate the furniture lock approx. 500 times before the next battery warning level is indicated.

- ▶ Inform the responsible person that the batteries in the furniture lock have to be replaced soon.

If the batteries are too low, this is indicated in three stages on the LEDs as follows:

- All LEDs light up yellow for a long time
- All LEDs briefly light up red
- All LEDs briefly light up yellow
- All LEDs briefly light up red
- All LEDs briefly light up yellow
- All LEDs briefly light up red
- All LEDs light up yellow for a long time
- All the LEDs light up yellow for a long time for a second time



Fig. 25: Battery warning level 2 indicators



To be able to open the furniture lock, you must hold the transponder to the reading field a second time.

- ▶ Hold the transponder to the reading field.

The LEDs briefly light up green one after the other. You can open the door. You can operate the furniture lock approx. 250 times before the next battery warning level is indicated.

- ▶ Inform the responsible person that the batteries in the furniture lock have to be replaced.

Battery warning level 3

When the batteries are almost flat, battery warning level 3 will be displayed as soon as you hold a transponder to the reading field. At battery warning level 3, all four LEDs light up as follows:

- All LEDs light up yellow for a long time
- All LEDs briefly light up red
- All LEDs briefly light up yellow
- All LEDs briefly light up red
- All LEDs briefly light up yellow
- All LEDs briefly light up red
- All LEDs light up yellow for a long time three times



Fig. 26: Indicators at battery warning level 3

The furniture lock does not open.

- ▶ Ensure that the batteries in the furniture lock are changed as quickly as possible.

i If the batteries are not completely flat yet, you can still open the door with the master card.

- Hold the master card in front of the reading field once.

You can now activate the furniture lock and open the door.

If the batteries are completely flat, you can no longer open the door.


- Change the batteries.

Proceed as follows to change the batteries:

- ▶ Remove the cover (1) by slightly pulling the furniture lock and set it to the side.
- ▶ Loosen the screw (3).
- ▶ Completely pull the battery holder (2) out of the battery compartment.

You need an Allen key (2.5 mm) to do this.

- ▶ Take the used batteries out of the battery holder (2).
- ▶ Insert the new batteries of the same type into the battery holder with the correct polarity as shown.

 The correct polarities are marked on the battery holder.

- ▶ Carefully slide the battery holder (2) into the battery compartment.
- ▶ Screw the battery compartment down using the screw (3) with a max. torque of 3 Nm.

You will hear a signal tone once the batteries have been inserted. The LEDs light up briefly.

- ▶ Refit the cover (1).
- ▶ Dispose of the used batteries in line with the locally applicable regulations.

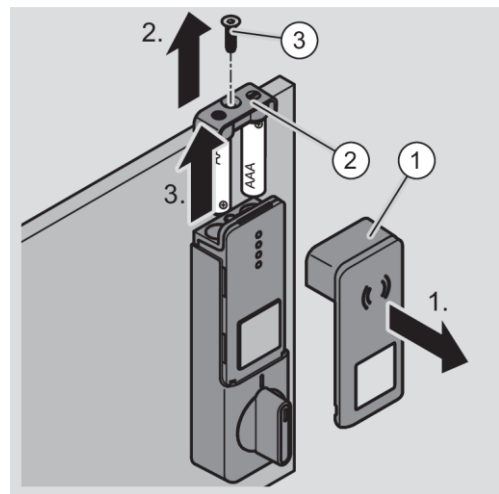


Fig. 27: Changing batteries



Following use

Dismantling the furniture lock

You can dismantle the furniture lock in reverse order to how it was assembled (see page 22 onwards).

Disposing of the furniture lock

Once its service life has elapsed, you can return the furniture lock to the manufacturer in its original packaging. The manufacturer will dispose of the furniture lock and the batteries it contains in an environmentally friendly manner.

Alternatively, have an approved specialist disposal company dispose of the furniture lock. Observe and follow the applicable regulations. In case of doubt, please contact your town/city or municipal administration.

The furniture lock is mainly made of plastic. It is also made of the following materials:

- Zamac
- Electronic components
- Batteries.



- ▶ Dispose of the furniture lock in line with the locally applicable regulations or through the manufacturer.



Contact

Please consult the branch in your country directly if you have additional questions.

DOM SICHERHEITSTECHNIK
GMBH & CO.KG

DE – 50321 Brühl
www.dom-group.eu

DOM NEDERLAND
NL – 2491 DH The Hague
www.dom-group.nl

HOBERG NV
B – 1300 Wavre
www.hoberg.be

DOM - CR S.P.A.
IT – 10154 Turin
www.dom-cr.it

DOM-MÉTALUX S.A.S.
F – 52115 Saint-Dizier
www.dom-europe.com

DOM-TITAN
SI – 1241 Kamnik
www.titan.si

EURO-ELZETT KFT.
HU – 9400 Sopron
www.euro-elzett-hu

UCEM
ES – 01013 Vitoria-Gasteiz
www.ucem.es

DOM SICHERHEITSTECHNIK
GMBH

A – 1140 Vienna
www.dom.at

DOM SCHWEIZ AG
CH – 8852 Altendorf
www.dom-group.ch

DOM-POLSKA SP. Z O.O.
PL – 42-202 Częstochowa
www.dom-polska.pl

DOM-UK LTD.
GB – Oldbury, B69 4LT
www.dom-security.com/uk/en

DOM CZECH SPOL. S R.O.
CZ – 180 00 Prague
www.dom-czech.cz

DOM RONIS S.A.S
F – 18600 Sancoins
www.dom-security.com/fr

MCM S.A.
ES – 01013 Vitoria-Gasteiz
www.mcm.es

ANTIPANIC S.p.a.
IT – 40013 Castelmaggiore
www.antipanic.it

DOM Sicherheitstechnik GmbH &
Co.KG is part of the DOM Security
Group headquartered in France
DOM SECURITY S.A.
F – 75017 Paris
www.dom-security.com