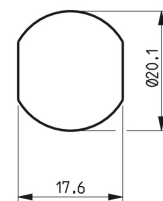
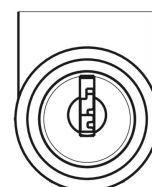
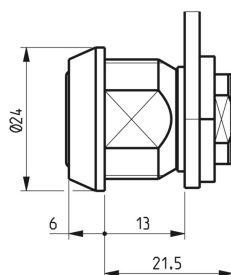


RONIS 911A



SECURITY TYPE

Wafer System

AVAILABLE LOCKS FIXINGS

Lock Fixing ID	Lock Fixing
L2	Nuts

AVAILABLE KEY SERIES

Key Series	Combinations	MK Possible
11	500	No
15	500	No
16	500	Yes
2	200	No
26	500	No
5	200	No
KM	1000	Yes

AVAILABLE ROTATIONS

Direction ID	Degrees	Direction	Key Extraction
D01	180	Left & Right	2
D02	90	Right Opening - Left Closing	1
D03	90	Left Opening - Right Closing	1
D04	90	Right Opening - Left Closing	2
D05	90	Left Opening - Right Closing	2
DL7	170	Left Opening - Right Closing	1
DR7	170	Right Opening - Left Closing	1

RONIS 911A

TECHNICAL FEATURES

Standard Material	Zamak
Standard Finish	Bright Chrome
Number of Keys	2
Standard Cam Family	1729-911
Body Length	13.00

APPLICATIONS OF USE

Metal Furniture, Electrical Equipment, Retail, Storage

ORDER INFORMATION

Type	Direction ID	Lock Fixing	Panel Thickness	Cam Fixing	Cam Family	Key Series	Product Code	DOM Ronis Reference
911A	D01	Nuts	6.0	Nuts	1729-911	2	911A-D01-L2-C2-2	911A
911A	D01	Nuts	6.0	Nuts	1729-911	5	911A-D01-L2-C2-5	911A
911A	D01	Nuts	6.0	Nuts	1729-911	11	911A-D01-L2-C2-11	911A
911A	D01	Nuts	6.0	Nuts	1729-911	15	911A-D01-L2-C2-15	911A
911A	D01	Nuts	6.0	Nuts	1729-911	26	911A-D01-L2-C2-26	911A
911A	D01	Nuts	6.0	Nuts	1729-911	KM	911A-D01-L2-C2-KM	911A
911A	D02	Nuts	6.0	Nuts	1729-911	2	911A-D02-L2-C2-2	911A1
911A	D02	Nuts	6.0	Nuts	1729-911	5	911A-D02-L2-C2-5	911A1
911A	D02	Nuts	6.0	Nuts	1729-911	11	911A-D02-L2-C2-11	911A1
911A	D02	Nuts	6.0	Nuts	1729-911	15	911A-D02-L2-C2-15	911A1
911A	D02	Nuts	6.0	Nuts	1729-911	26	911A-D02-L2-C2-26	911A1
911A	D02	Nuts	6.0	Nuts	1729-911	KM	911A-D02-L2-C2-KM	911A1
911A	D03	Nuts	6.0	Nuts	1729-911	2	911A-D03-L2-C2-2	911A2
911A	D03	Nuts	6.0	Nuts	1729-911	5	911A-D03-L2-C2-5	911A2

RONIS 911A

Type	Direction ID	Lock Fixing	Panel Thickness	Cam Fixing	Cam Family	Key Series	Product Code	DOM Ronis Reference
911A	D03	Nuts	6.0	Nuts	1729-911	11	911A-D03-L2-C2-11	911A2
911A	D03	Nuts	6.0	Nuts	1729-911	15	911A-D03-L2-C2-15	911A2
911A	D03	Nuts	6.0	Nuts	1729-911	26	911A-D03-L2-C2-26	911A2
911A	D03	Nuts	6.0	Nuts	1729-911	KM	911A-D03-L2-C2-KM	911A2
911A	D04	Nuts	6.0	Nuts	1729-911	2	911A-D04-L2-C2-2	911A4
911A	D04	Nuts	6.0	Nuts	1729-911	5	911A-D04-L2-C2-5	911A4
911A	D04	Nuts	6.0	Nuts	1729-911	11	911A-D04-L2-C2-11	911A4
911A	D04	Nuts	6.0	Nuts	1729-911	15	911A-D04-L2-C2-15	911A4
911A	D04	Nuts	6.0	Nuts	1729-911	26	911A-D04-L2-C2-26	911A4
911A	D04	Nuts	6.0	Nuts	1729-911	KM	911A-D04-L2-C2-KM	911A4
911A	D05	Nuts	6.0	Nuts	1729-911	2	911A-D05-L2-C2-2	911A3
911A	D05	Nuts	6.0	Nuts	1729-911	5	911A-D05-L2-C2-5	911A3
911A	D05	Nuts	6.0	Nuts	1729-911	11	911A-D05-L2-C2-11	911A3
911A	D05	Nuts	6.0	Nuts	1729-911	15	911A-D05-L2-C2-15	911A3
911A	D05	Nuts	6.0	Nuts	1729-911	26	911A-D05-L2-C2-26	911A3
911A	D05	Nuts	6.0	Nuts	1729-911	KM	911A-D05-L2-C2-KM	911A3
911A	DL7	Nuts	6.0	Nuts	1729-911	2	911A-DL7-L2-C2-2	911A6
911A	DL7	Nuts	6.0	Nuts	1729-911	5	911A-DL7-L2-C2-5	911A6
911A	DL7	Nuts	6.0	Nuts	1729-911	11	911A-DL7-L2-C2-11	911A6
911A	DL7	Nuts	6.0	Nuts	1729-911	15	911A-DL7-L2-C2-15	911A6

RONIS 911A

Type	Direction ID	Lock Fixing	Panel Thickness	Cam Fixing	Cam Family	Key Series	Product Code	DOM Ronis Reference
911A	DL7	Nuts	6.0	Nuts	1729-911	26	911A-DL7-L2-C2-26	911A6
911A	DL7	Nuts	6.0	Nuts	1729-911	KM	911A-DL7-L2-C2-KM	911A6
911A	DR7	Nuts	6.0	Nuts	1729-911	2	911A-DR7-L2-C2-2	911A5
911A	DR7	Nuts	6.0	Nuts	1729-911	5	911A-DR7-L2-C2-5	911A5
911A	DR7	Nuts	6.0	Nuts	1729-911	11	911A-DR7-L2-C2-11	911A5
911A	DR7	Nuts	6.0	Nuts	1729-911	15	911A-DR7-L2-C2-15	911A5
911A	DR7	Nuts	6.0	Nuts	1729-911	26	911A-DR7-L2-C2-26	911A5
911A	DR7	Nuts	6.0	Nuts	1729-911	KM	911A-DR7-L2-C2-KM	911A5