

DOM Sigma Plus

SECURITY CAN COST SO LITTLE

The RS Sigma system is for customers who value a high level of security but watch their costs at the same time.



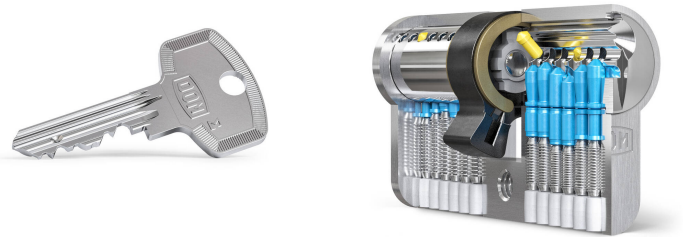
TECHNICAL FEATURES

| | |
|------------------------------------|----------------------------------------------|
| Adjustable Cam | Yes |
| Anti Bump Protection | Yes |
| Anti Drill Core Protection | Yes |
| Anti Drill Protection Housing | Yes |
| Anti Pick Protection | Yes |
| Anti Snap Protection | No |
| Cylinder Mechanism | Pin |
| Fire Resistant | Yes |
| Key Type | Conventional Key System |
| Maximum Number of Lateral Elements | 12 |
| Maximum Number of Upper Elements | 6 |
| MKS Possibilities | Grand Master Keyed, Master Key, Single Coded |
| Number of Active Locking Elements | 6 |
| Number of Ant Bumping Elements | 2 |
| Number of Anti Picking Elements | 2 |
| Number of Moveable Elements | 0 |
| Number of Passive Elements | 12 |
| Theoretical Locking Combinations | 262144 |
| Total Number of Locking Elements | 18 |

CONFIGURATIONS

| | |
|---------------------------------|---------------------------------------------------------------------------------------------------------|
| Available as a Service Cylinder | No |
| Modular | Optional |
| Optional Cams | Cam 90°, Cam Biffar, Swiss Cam, Cam Corbin, Spanish Cam 13.2 mm, 10 Teeth Gear Cams, 14 Teeth Gear Cams |
| Sea Water Protection | Optional |
| Number of Keys | 3 |

DOM Sigma Plus



APPLICATIONS OF USE

Airports, Education, Financial, Homes, Hospitals, Industrial, Medium to Large Sized Businesses, Offices, Plants, Public Buildings, Small to Medium Sized Businesses, Hotels

CERTIFICATIONS

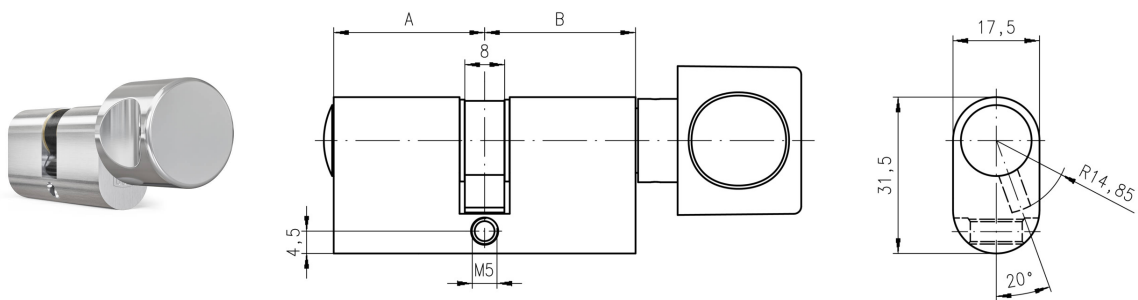
| | |
|-----------------|-----|
| SKG Star Rating | 2 * |
|-----------------|-----|

FEATURES & BENEFITS

| | |
|---------------------------|----------------------------------------------------------------------------------------|
| Standard Housing Material | Brass |
| Key Material | New Silver |
| Standard Warranty | 2 Years |
| Standard Finish | Matt Nickel |
| Optional Finishes | Bright Brass, Bright Chrome, Bright Nickel, Matt Chrome, Matt Brass, Gold, Dark Bronze |

DOM Sigma Plus

VARIANTS



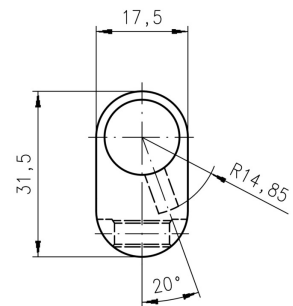
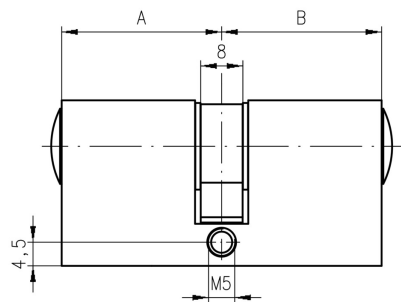
Classroom Cylinder KRL

A classroom cylinder KRL is a double cylinder with key access on the outside and a knob with a clockwise or anticlockwise operating slip clutch mechanism on the inside.

- Staff access at all times as it can't be locked via the internal knob thanks to its slip clutch mechanism.
- Lock security class according to DIN EN 1303 2015-10
- Can be integrated into existing digital access control systems using the DOM ClipTag.
- High-security cylinder, utilising advanced locking technologies to help protect against modern break in techniques.
- Trademark protected locking system.
- A single key can control multiple doors by creating a master key system.
- Modular technology allows you to fulfil any cylinder size needed.

DOM Sigma Plus

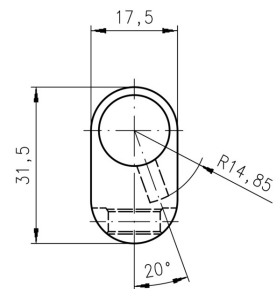
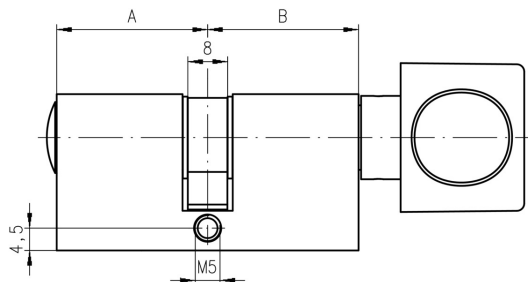
VARIANTS (CONTINUED)



Double Cylinder

A double cylinder has an internal and external key way and is hence a both sided lockable oval cylinder.

- Available with 360° freewheel functions (633FRL).
- If required also lockable if the key is inserted from one side (633T).
- Can be incorporated into all DOM Masterkey systems.
- Optional: seawater-resistant version.



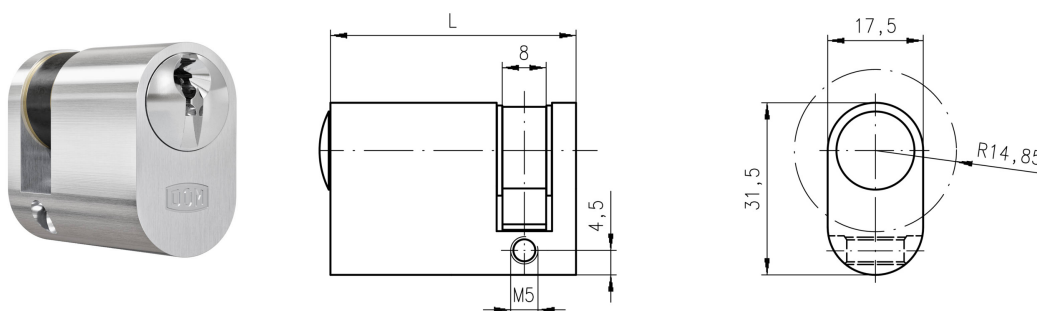
Double Cylinder with Knob

A double cylinder with knob offers key access from one side and a knob option on the other side.

- Can be incorporated into all DOM Masterkey systems.
- Optional: seawater-resistant version.

DOM Sigma Plus

VARIANTS (CONTINUED)



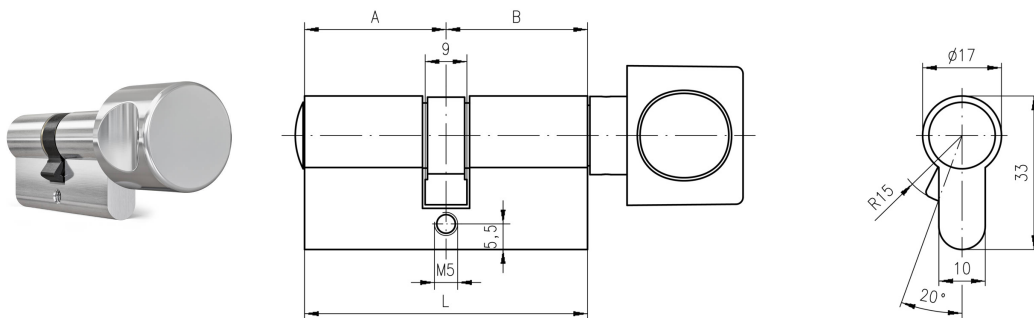
Half Cylinder

A half cylinder offers key access on one side only and is hence a one sided lockable oval cylinder.

- Adjustable cam in 8 settings
 - Available with 360° freewheel functions (633FRLH).
 - Available in different lengths and the flexible modular technology.
 - Available with gearwheel cam 10 and 14.
 - Can be incorporated into all DOM Masterkey systems.
 - Optional: seawater-resistant version.
-

DOM Sigma Plus

VARIANTS (CONTINUED)



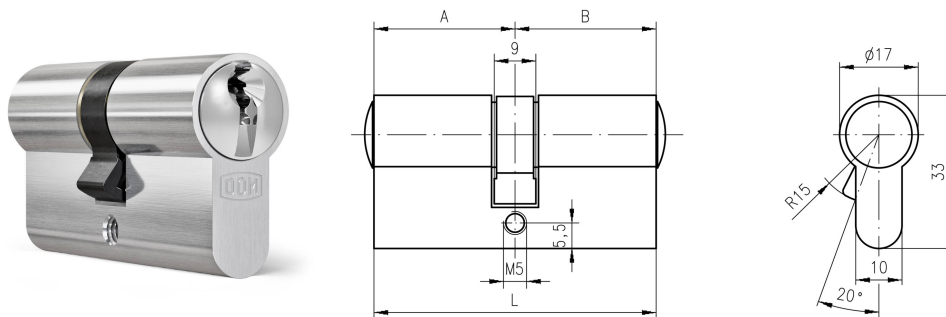
Classroom Cylinder KRL

A classroom cylinder KRL is a double cylinder with key access on the outside and a knob with a clockwise or anticlockwise operating slip clutch mechanism on the inside.

- Staff access at all times as it can't be locked via the internal knob thanks to its slip clutch mechanism.
- Lock security class according to DIN EN 1303 2015-11
- Can be integrated into existing digital access control systems using the DOM ClipTag.
- High-security cylinder, utilising advanced locking technologies to help protect against modern break in techniques.
- Trademark protected locking system.
- A single key can control multiple doors by creating a master key system.
- Modular technology allows you to fulfil any cylinder size needed.

DOM Sigma Plus

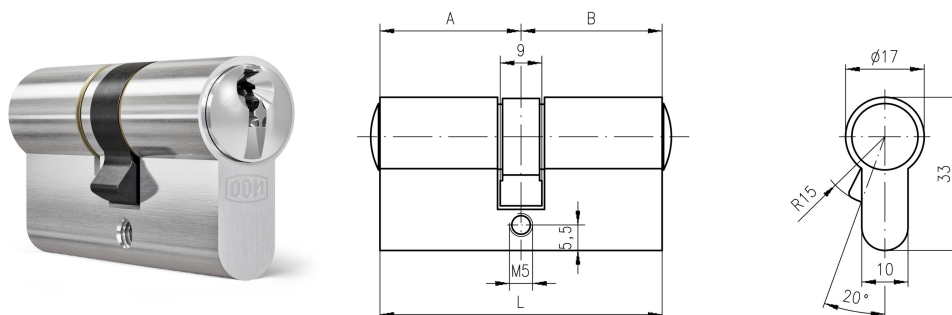
VARIANTS (CONTINUED)



Double Cylinder

A double cylinder has an internal and external key way and is hence a both sided lockable cylinder.

- Available with 360° freewheel functions (333FRL).
- If required also lockable if the key is inserted from one side (333T).
- Can be incorporated into all DOM Masterkey systems.
- Optional: seawater-resistant version.



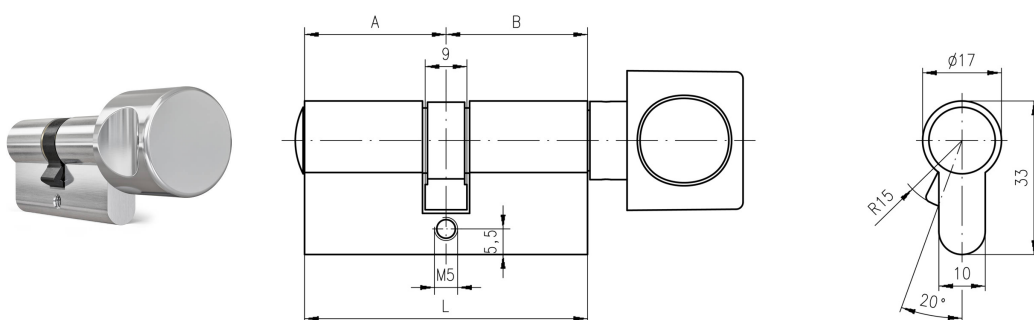
Double Cylinder with Free Wheel Function

A double cylinder with free wheel function offers a rotating cam when both keys are removed.

- With cylinders which are installed in mortise locks with panic function, e.g. in corridor doors or emergency doors.
- This function ensures that both cylinder cores of the profile cylinder are free to rotate when connected to the cam when the keys are removed.
- Can be incorporated into all DOM Masterkey systems.

DOM Sigma Plus

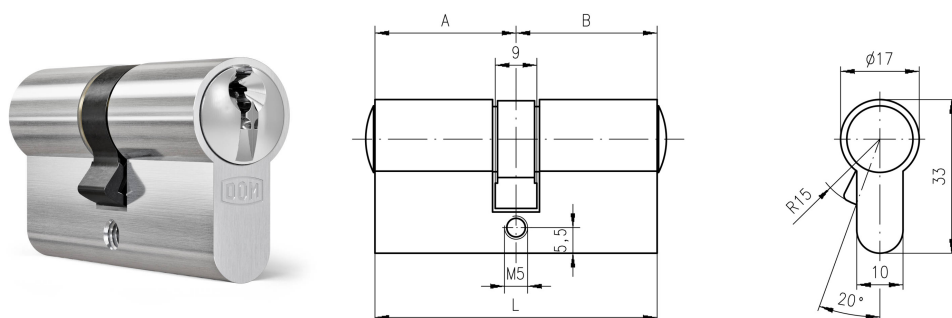
VARIANTS (CONTINUED)



Double Cylinder with Knob

A double cylinder with knob offers key access from one side and a knob option on the other side.

- Can be incorporated into all DOM Masterkey systems.
- Optional: seawater-resistant version.

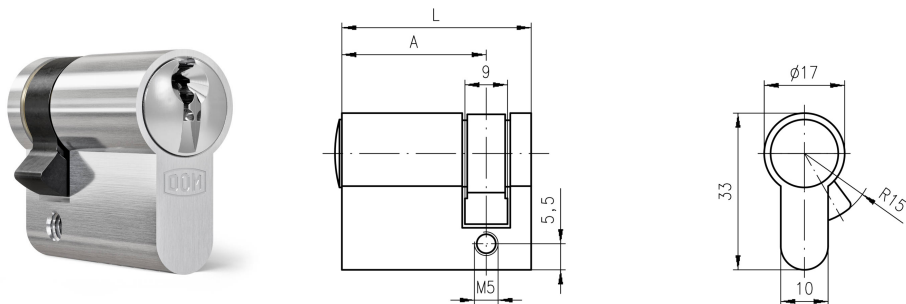


Double Entry Cylinder

A double entry cylinder offers key access from both sides and allows to lock and unlock the cylinder from one side even if there is a key inserted on the other side.

DOM Sigma Plus

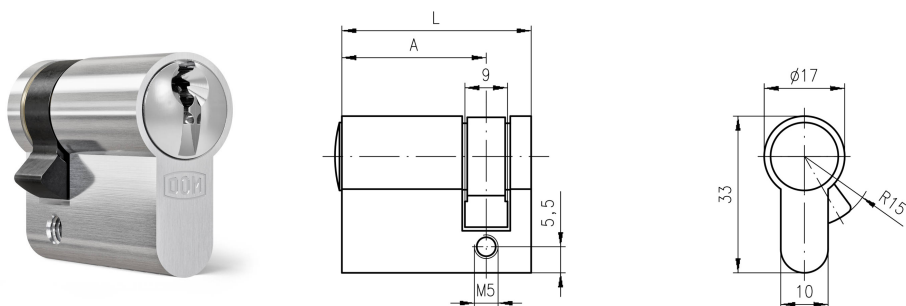
VARIANTS (CONTINUED)



Half Cylinder

A half cylinder offers key access on one side only and is hence a one sided lockable cylinder.

- Adjustable cam in 8 settings
- Available with 360° freewheel functions (333FRLH).
- Available in different lengths and the flexible modular technology.
- Available with gearwheel cam 10 and 14.
- Can be incorporated into all DOM Masterkey systems.
- Optional: seawater-resistant version.



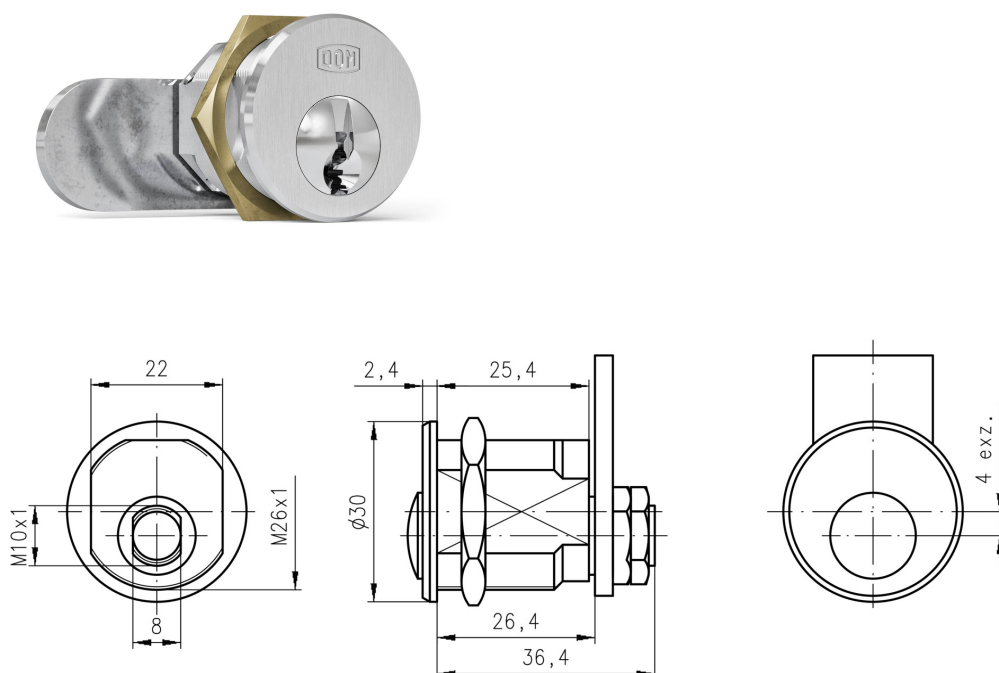
Half Cylinder with Free Wheel Function

A half cylinder with free wheel function offers a rotating cam when the key is removed.

- With cylinders which are installed in mortise locks with panic function, e.g. in corridor doors or emergency doors.
- This function ensures that both cylinder cores of the profile cylinder are free to rotate when connected to the cam when the keys are removed.
- Can be incorporated into all DOM Masterkey systems.

DOM Sigma Plus

VARIANTS (CONTINUED)

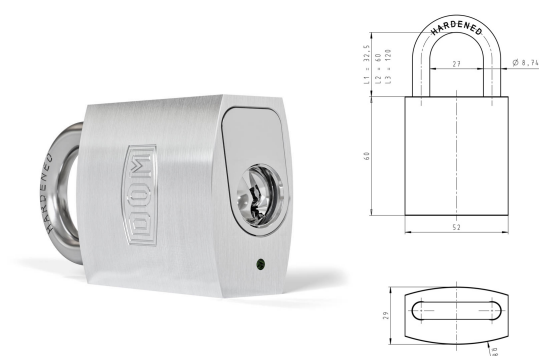


Heavy Cam Lock 382

Heavy Cam Locks are for use in steel doors. The attached lever acts as a bolt in the locking mechanism.

DOM Sigma Plus

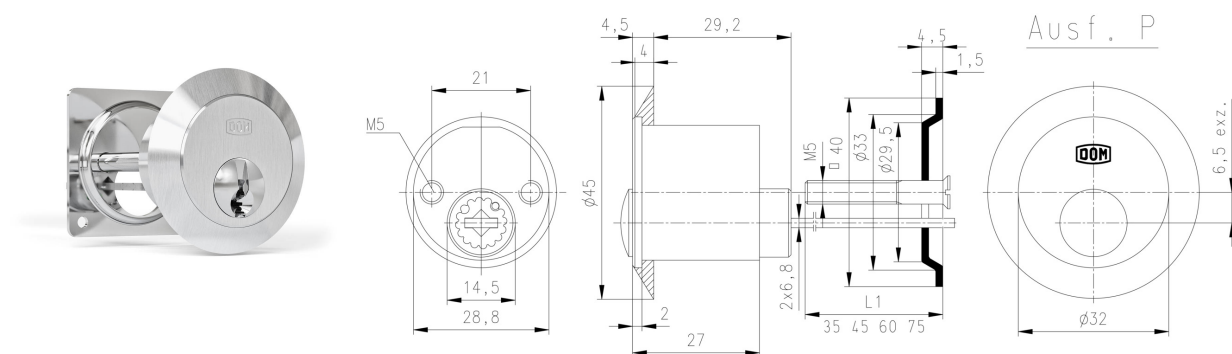
VARIANTS (CONTINUED)



Grade 3 Padlock

A padlock with grade 3 security class according to DIN EN 12320, compatible with any Euro profile half cylinder.

- High security due to its solid brass and black chrome body.
- Resistance to modern intrusion techniques thanks to a hardened steel shackle.
- DIN EN 12320 certified - tested and passed all Standard security requirements in the UK.
- Compatible with any European profile half cylinders.
- Key retaining function means the key is always where you need it to lock the padlock.
- Locking with the key prevents accidental locking or trapping of the key inside the premises.
- Flexible locking with three shackle sizes to choose from: 32.5, 60 and 120mm.



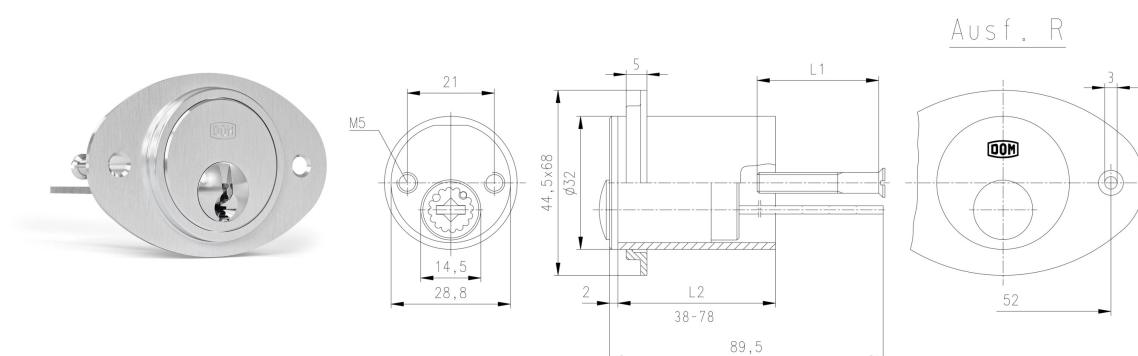
RIM Cylinder 555P

A rim cylinder 555 is for use in wooden and metal doors.

- Version for wooden doors 555P
- Version for metal doors 555R

DOM Sigma Plus

VARIANTS (CONTINUED)

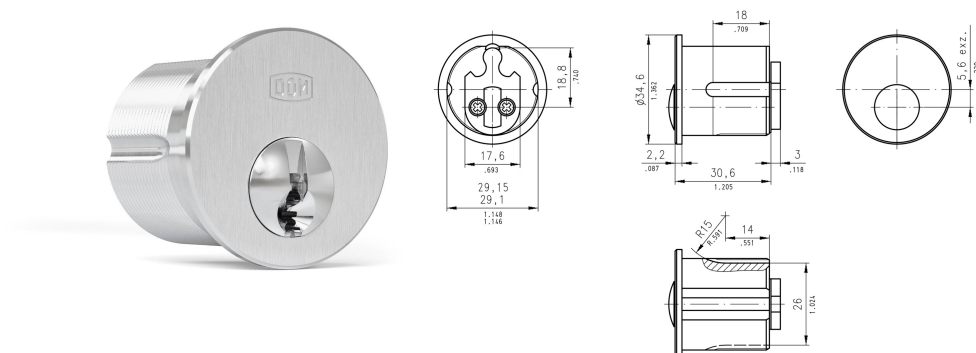


RIM Cylinder 555R

A rim cylinder 555 is for use in wooden and metal doors.

- Version for wooden doors 555P

- Version for metal doors 555R

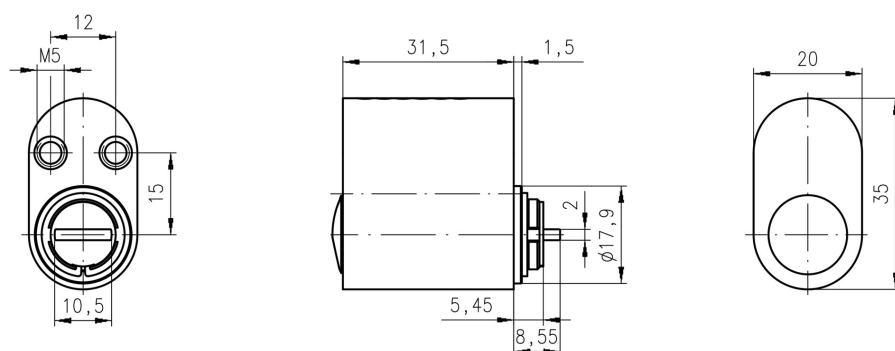


Screw in Cylinder 419

A screw in cylinder 419 is suitable for metal shutters and doors.

DOM Sigma Plus

VARIANTS (CONTINUED)

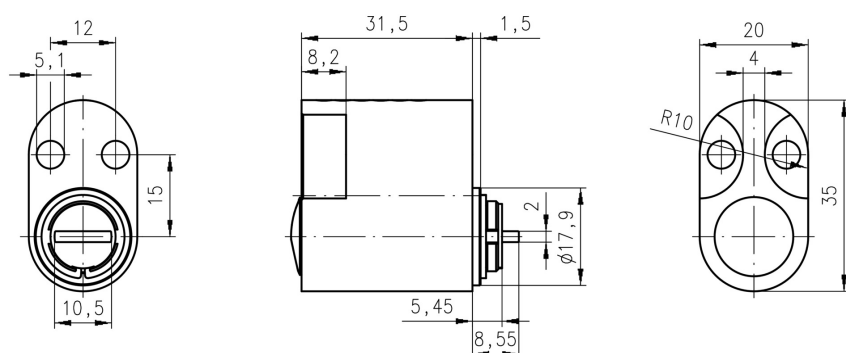


Single External Cylinder Short Cam

An oval cylinder for use on the outside.

DOM Sigma Plus

VARIANTS (CONTINUED)



Single Internal Cylinder Short Cam

An oval cylinder for use on the inside.

DOM Sigma Plus

FINISHES



001 Matt Nickel



004 Polished Chrome



006 Polished Brass



009 Antique Bronze



025 Gold Plated



029 Bright Bronze



003 Matt Chrome



005 Matt Brass



007 Dark Bronze



017 Black



027 Matt Black

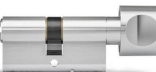
KNOBS



K1



K4



K6



K3



K5