

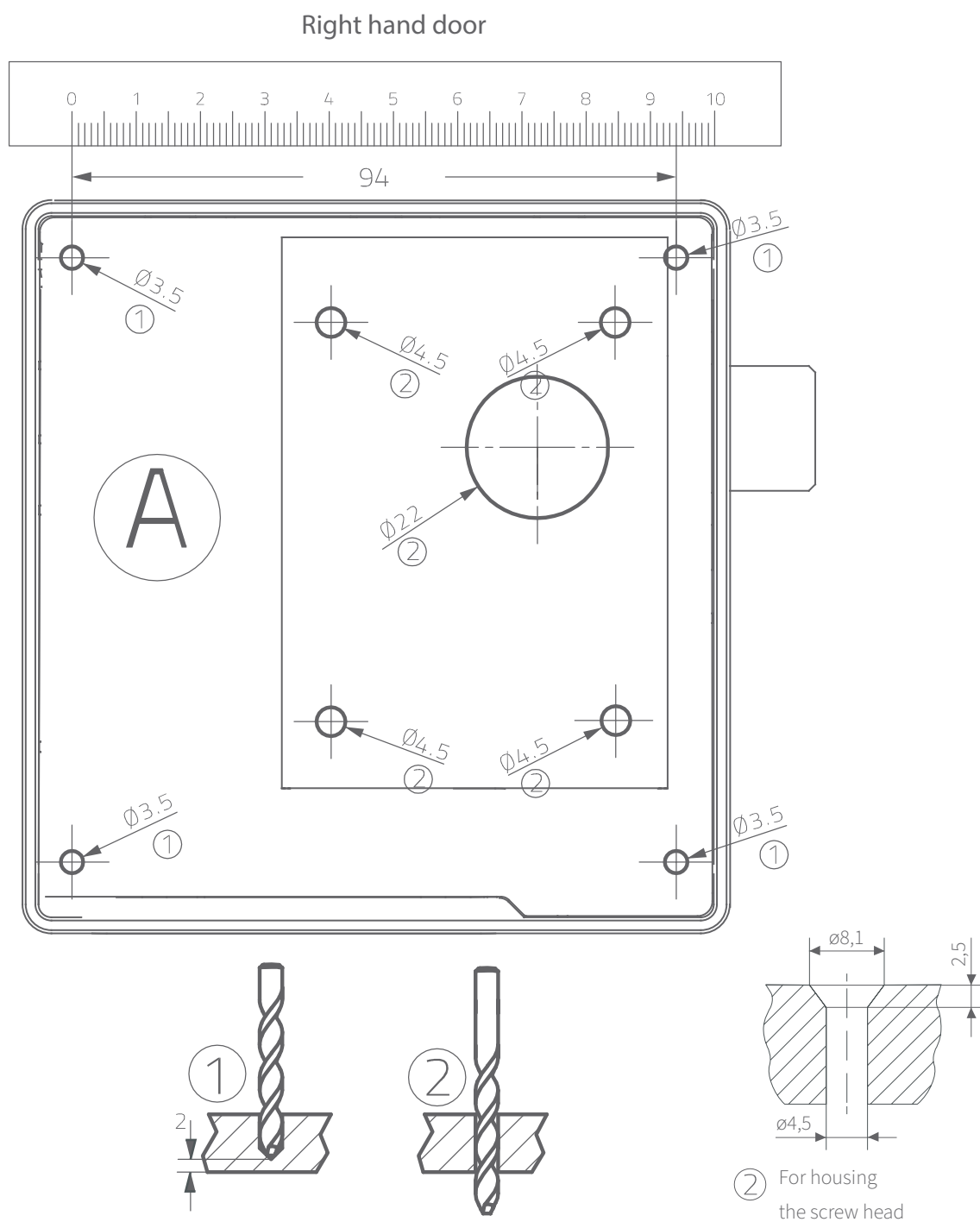


Tronic Slim

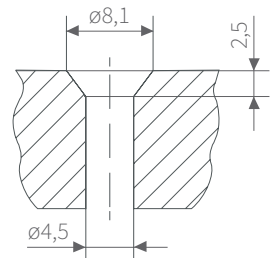
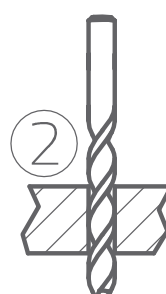
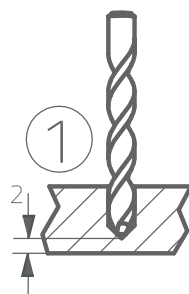
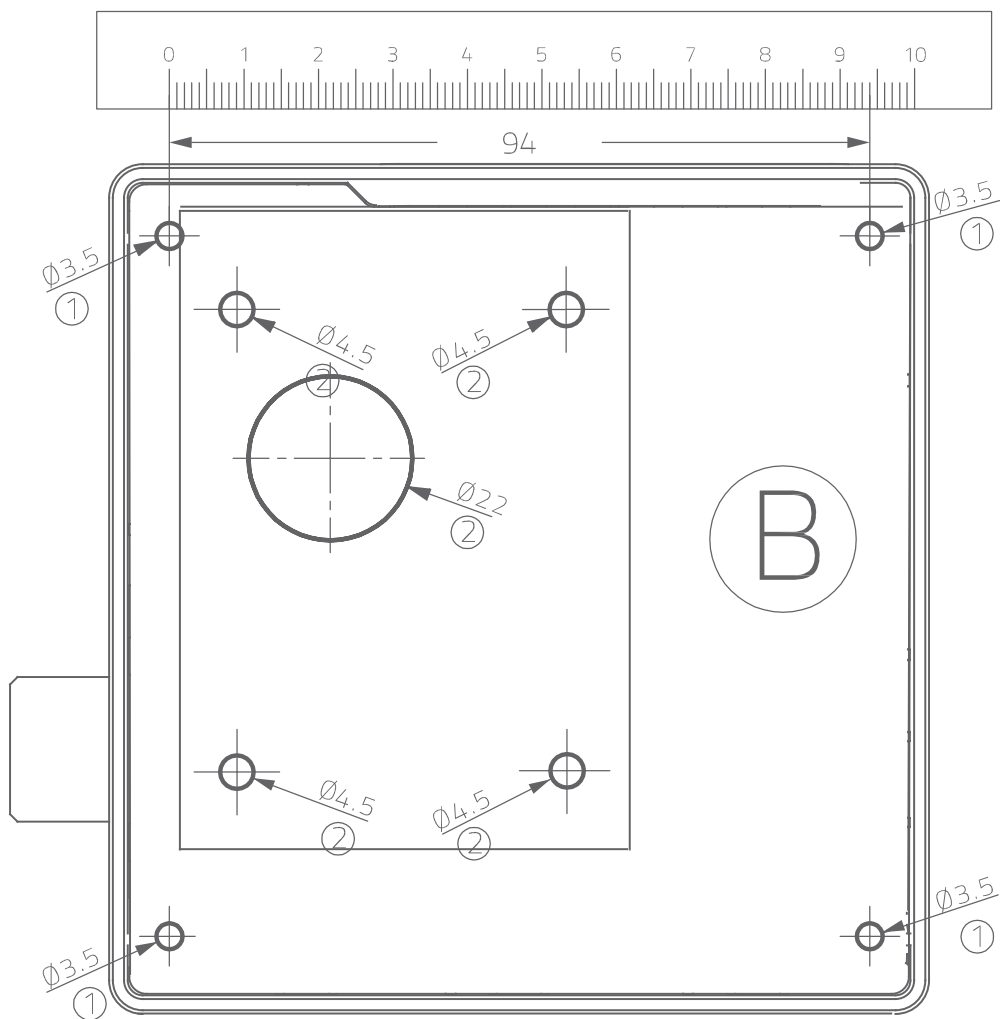
Assembly

Drilling template

ASSEMBLY



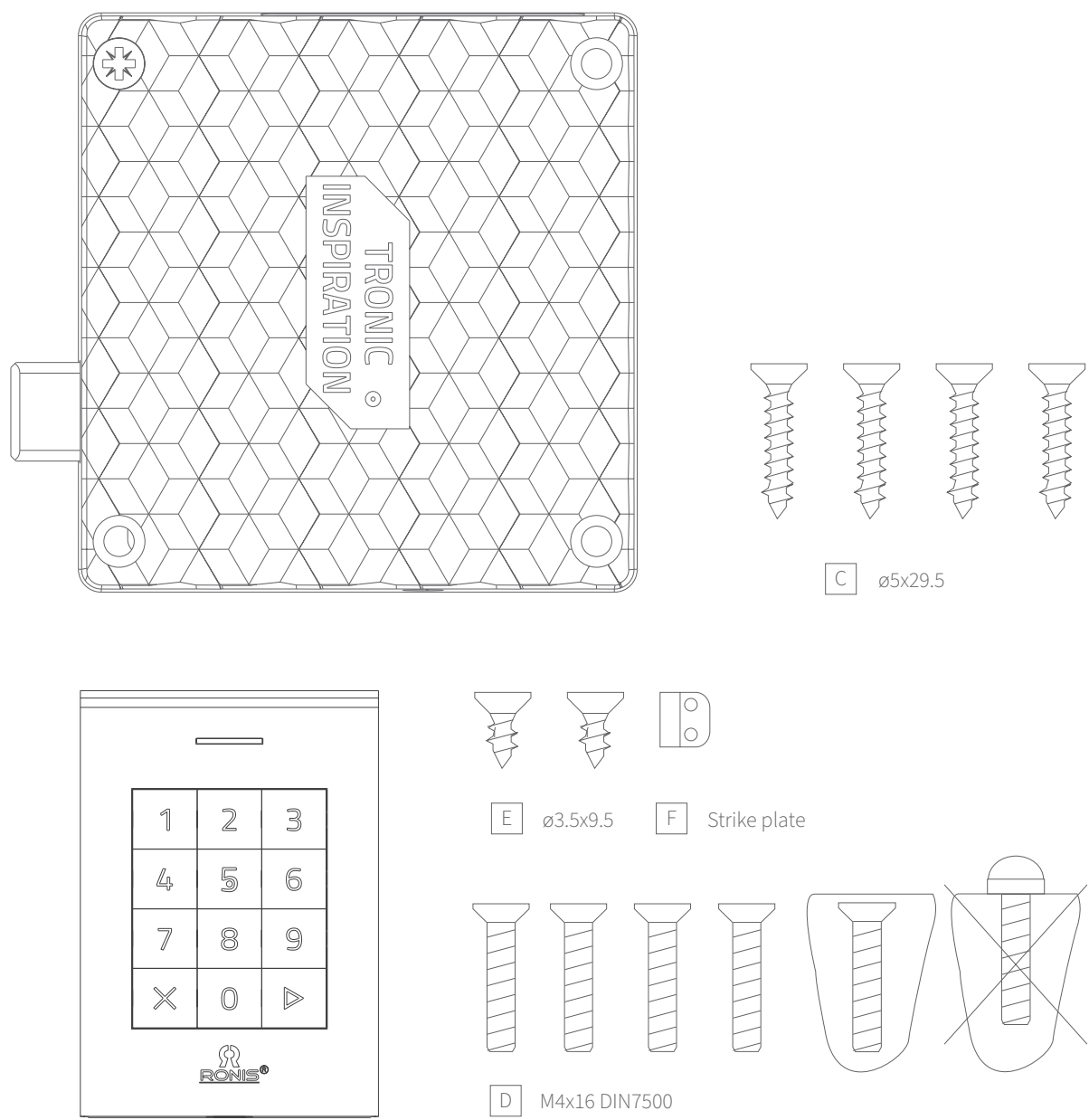
Left hand door



② For housing the screw head

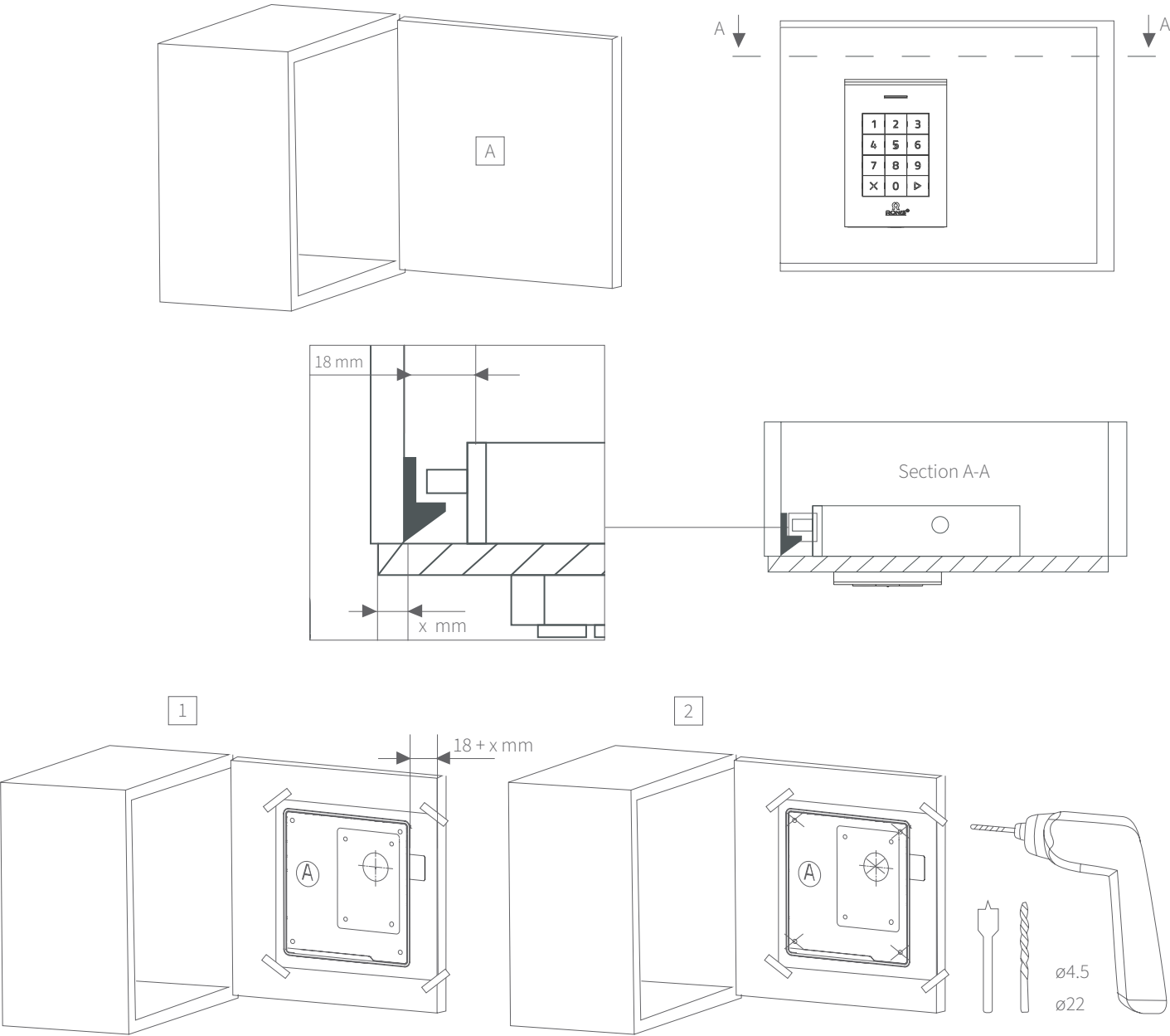
Accessories

ASSEMBLY



Right door assembly

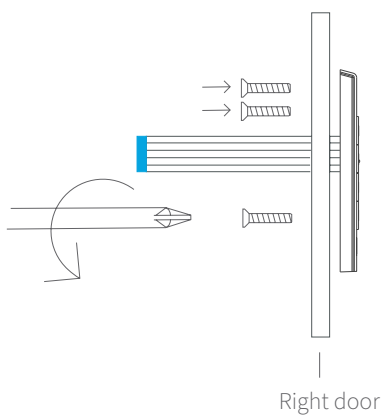
ASSEMBLY



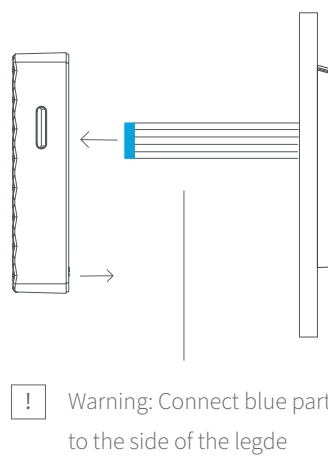
Right door assembly

ASSEMBLY

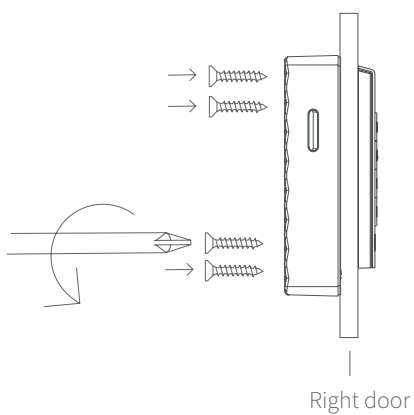
3



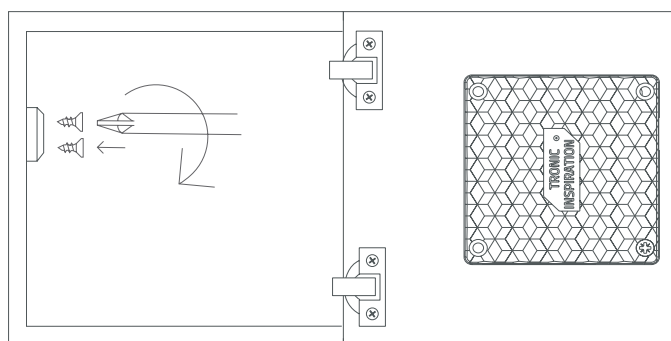
4



5

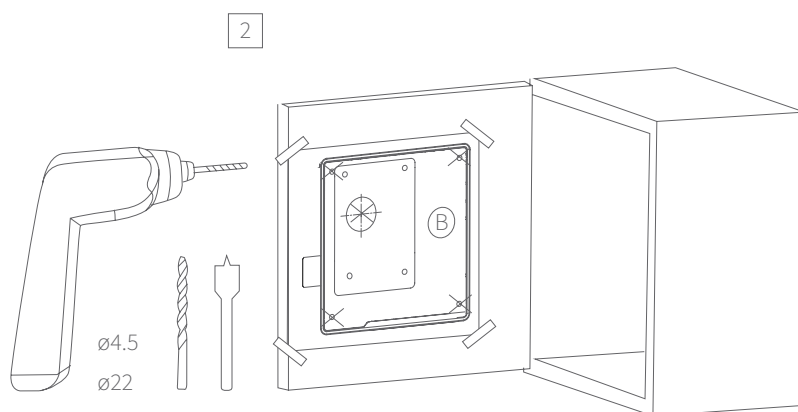
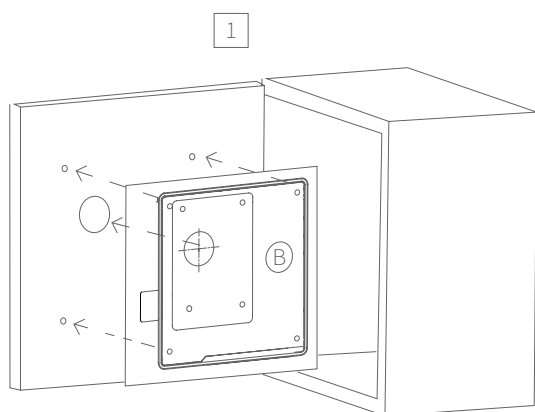
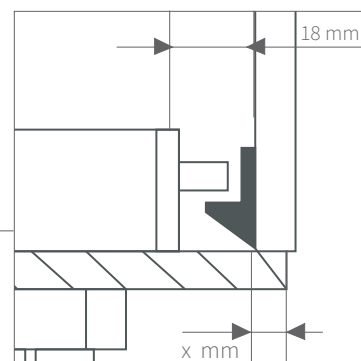
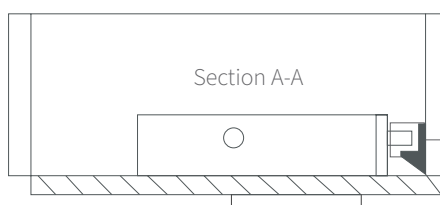
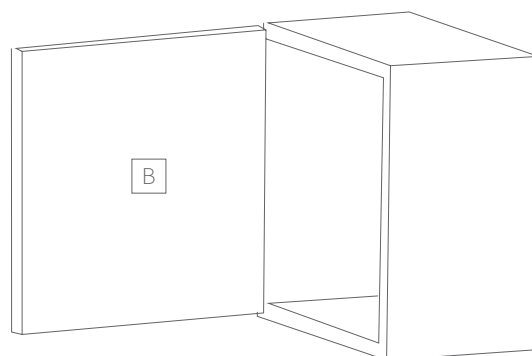
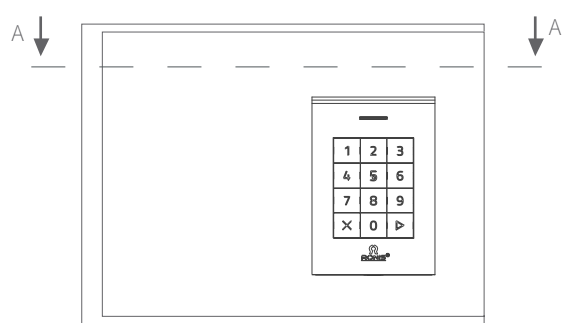


6



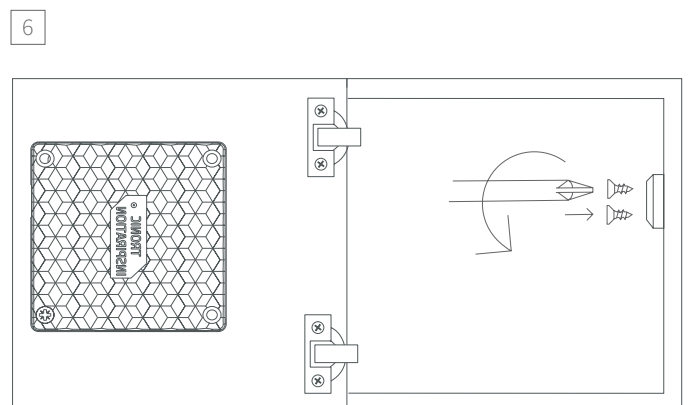
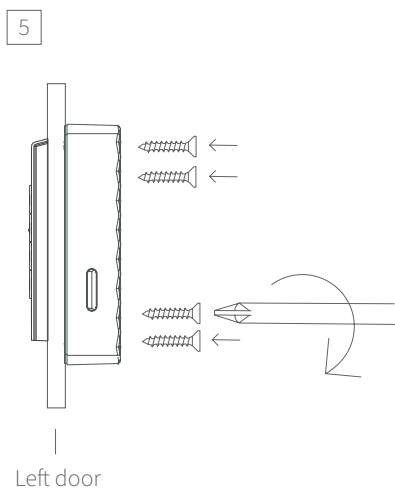
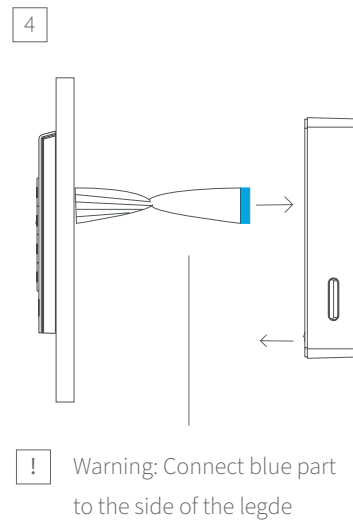
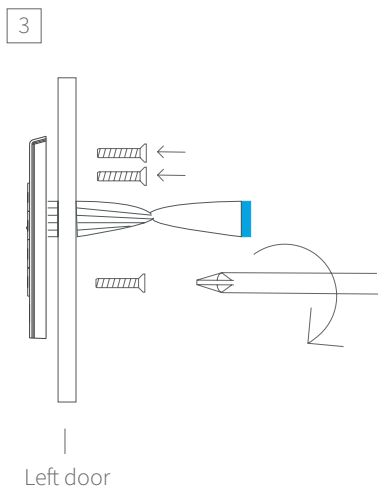
Left door assembly

ASSEMBLY



Left door assembly

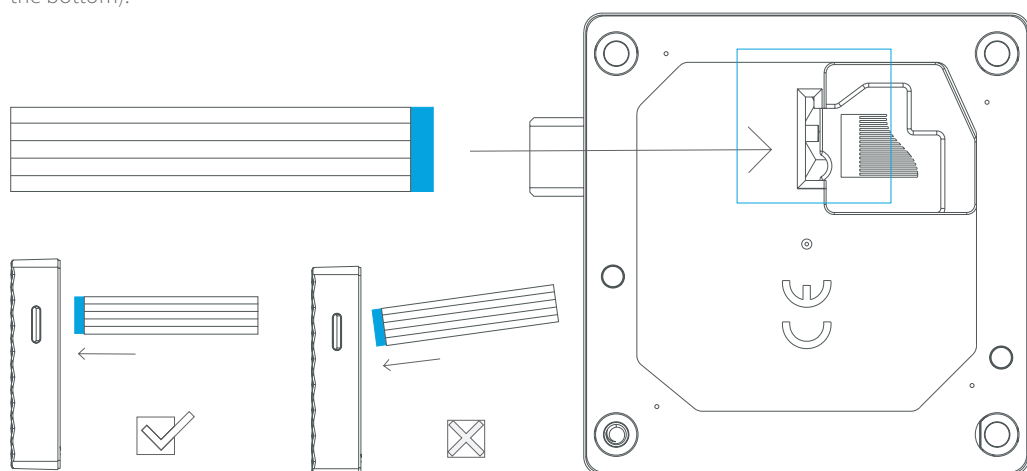
ASSEMBLY



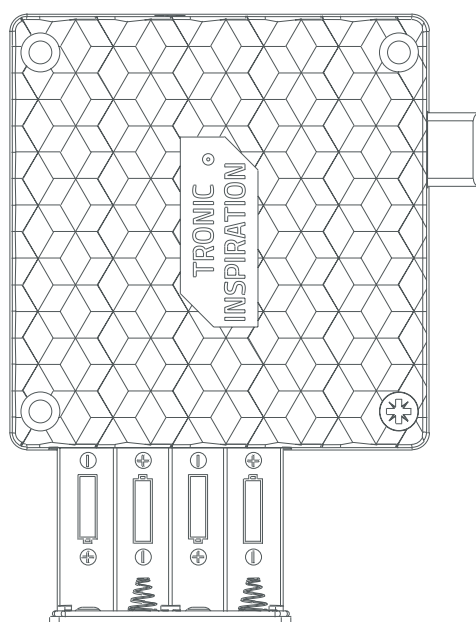
1

Verify that the cable is properly connected (straight and untill the bottom).

Don't push any key during the wire assembly process.



2



Release the batteries thanks to T20 Torx Security screw located on the opposite of the battery case

Verify that the batteries are in the right polarity (as indicated in the battery box).

IMPORTANT

The battery pack must remain connected during the release of the batteries. Otherwise, the internal clock will lose the time configuration.

Important notes

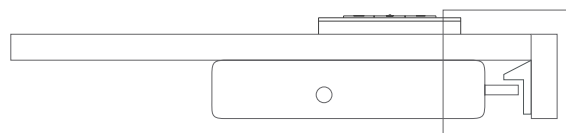
ASSEMBLY

3

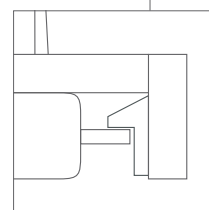
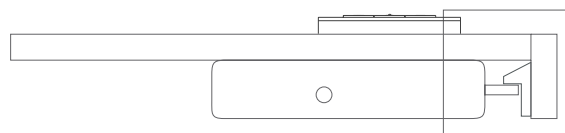
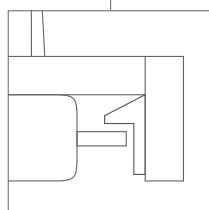


Verify that the screws are not fastened too tight (<20kgf/cm²).

4



Verify that the latch works smoothly in and out, without any friction with the door frame.

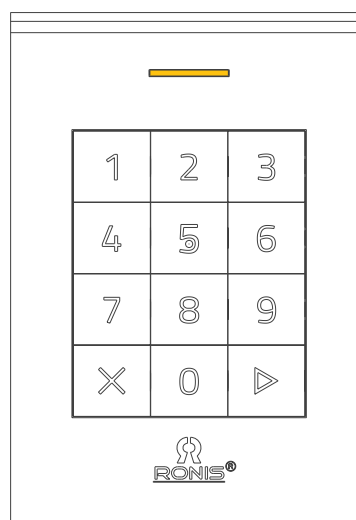


Batteries

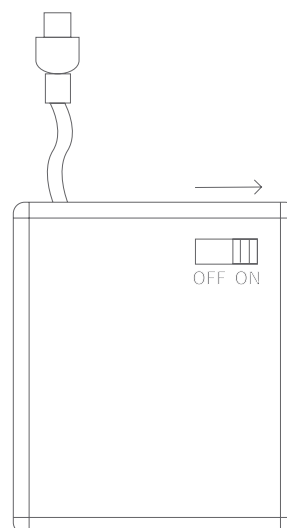
ASSEMBLY

If the yellow LED blinks

Dead batteries: replace batteries.



1. Make sure the battery pack contains full powered batteries (don't screw the battery pack too tight to avoid breaking the mechanism). make sure to use the USB-C adaptor.
2. If the lock is closed, introduce the user code (or the master one) to open it.
3. Replace the old batteries for new ones and disconnect the battery pack.



Important

We suggest to change once every three years the batteries for ensure their good condition. After a long time, the batteries can deteriorate

and damage the lock, especially in hot environments

Do not clean the locks with cleaning

products with hydrochloric acid, lye or corrosive components, especially on the metallic parts.